

VOLU-probe / VS – INDUSTRIAL

FLAT OVAL CONFIGURATION

BEADED EDGE

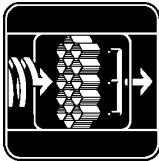
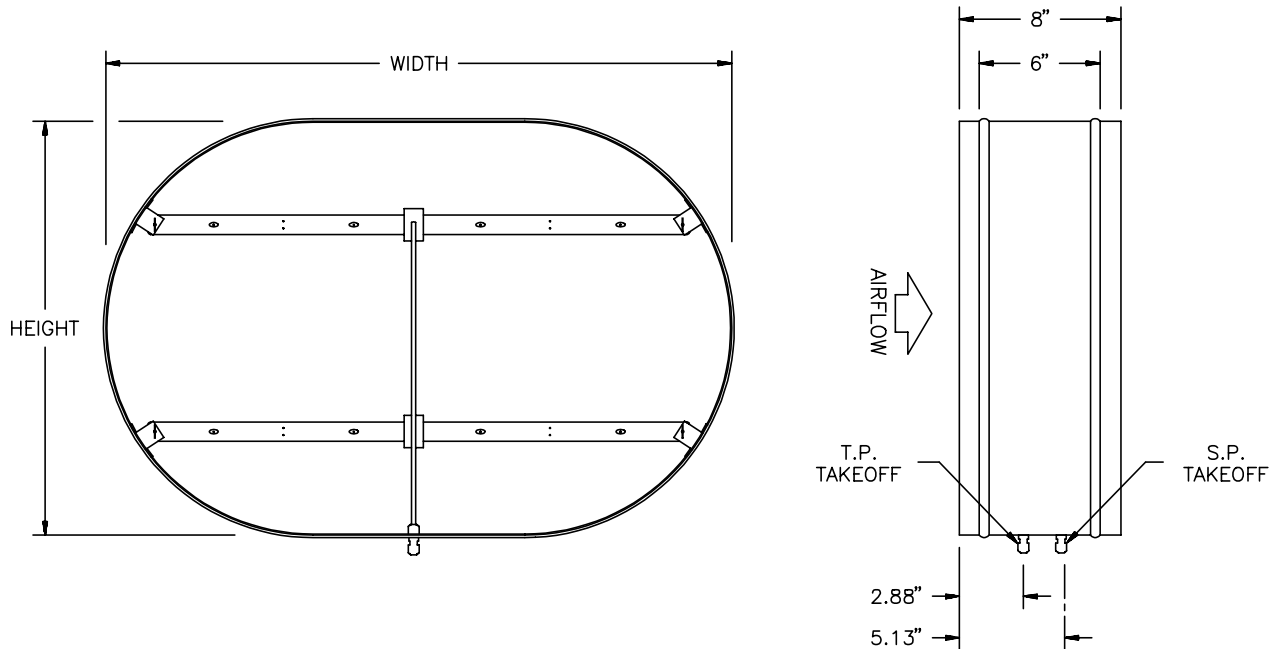
STANDARD CONSTRUCTION

Casing.	18 ga. galvanized sheetmetal, spot welded casing seams.
Flanges.	Beaded edge available on measuring stations having a smallest dimension of 8" through 24".
Total and Static Pressure Sensors.	Type 6063 extruded aluminum.
Operating Temperature.	Continuous operation to 200°F.
Connection Fittings.	¼" brass compression type located on the long dimension.

OPTIONAL CONSTRUCTION

- | | |
|--|---|
| <ul style="list-style-type: none"> <input type="checkbox"/> Epoxy Polyamide Coating <ul style="list-style-type: none"> <input type="checkbox"/> Casing interior and sensor exteriors <input type="checkbox"/> Inside and outside of casing only <input type="checkbox"/> Sensor and manifold exteriors only <input type="checkbox"/> Brass Connection Fittings <ul style="list-style-type: none"> <input type="checkbox"/> ⅜" compression type <input type="checkbox"/> Barbed fitting for ¼" tube <input type="checkbox"/> Barbed fitting for ⅜" tube | <ul style="list-style-type: none"> <input type="checkbox"/> Polyurethane Coating <ul style="list-style-type: none"> <input type="checkbox"/> Casing interior and sensor exteriors <input type="checkbox"/> Inside and outside of casing only <input type="checkbox"/> Sensor and manifold exteriors only <input type="checkbox"/> Non-Standard Signal Take-Off Location |
|--|---|

DIMENSIONAL SPECIFICATIONS



AIR MONITOR CORPORATION