

VOLU-trol /F

CIRCULAR CONFIGURATION

FAN-E STATION WITH OPPOSED BLADE DAMPER

STANDARD CONSTRUCTION

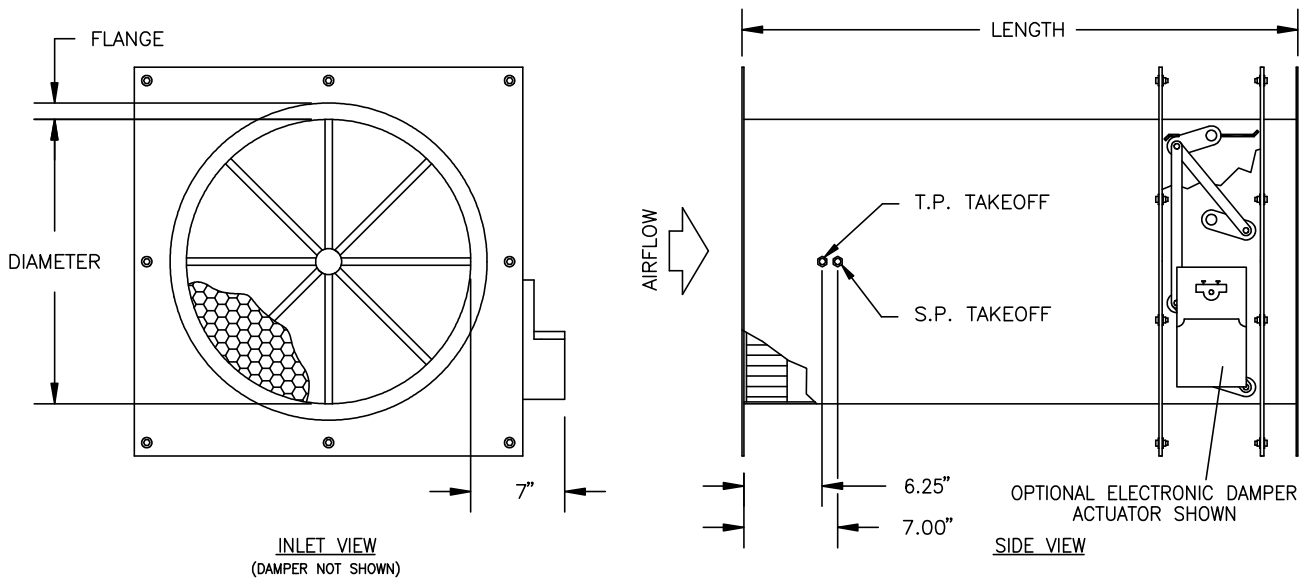
Casing.	18 gauge galvanized sheetmetal, spot welded casing seams.
Flanges.	1" flange, 14 gauge galvanized sheetmetal, fusion welded to the casing.
Air Equalizer and Straightener.	Corrosion resistant 3003 aluminum. 3" deep x 1/2" cell.
Total Pressure Header.	Copper tubing assembled with 50/50 tin/lead solder. Galvanized mounting and support brackets.
Static Pressure Header.	Copper tubing assembled with 50/50 tin/lead solder.
Operating Temperature.	Continuous operation to 120°F.
Connection Fittings.	1/4" brass compression type.
Damper Blades.	18 gauge galvanized sheetmetal.
Damper Bearings.	Nylon.
Damper Linkage.	Mechanical linkage (12 gauge galvanized steel).

OPTIONAL CONSTRUCTION

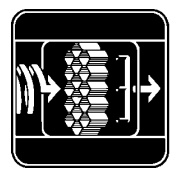
Damper Actuator.

- Manual quadrant.
- Direct coupled, fail in position, modulating electronic actuator, 2-10VDC or 4-20mA control signal. Requires 24VAC power supply.
- Pneumatic actuator with pilot positioner, 8-13 psig control signal. Fail Open Fail Close
- Pneumatic actuator with pilot positioner and E/P (200 SCIM), 2-10VDC or 4-20mA control signal. Requires 24VAC power and 20 psig instrument air. Fail Open Fail Close

DIMENSIONAL SPECIFICATIONS



<u>VOLU-trol DIAMETER</u>	<u>LENGTH</u>
8", 10", 12"	20"
14", 16", 18", 20", 22"	24"



AIR MONITOR
CORPORATION