

# VOLU-trol /F – STAINLESS STEEL

## CIRCULAR CONFIGURATION

### FAN-E STATION WITH ELECTRONIC DAMPER ACTUATOR

**STANDARD CONSTRUCTION**

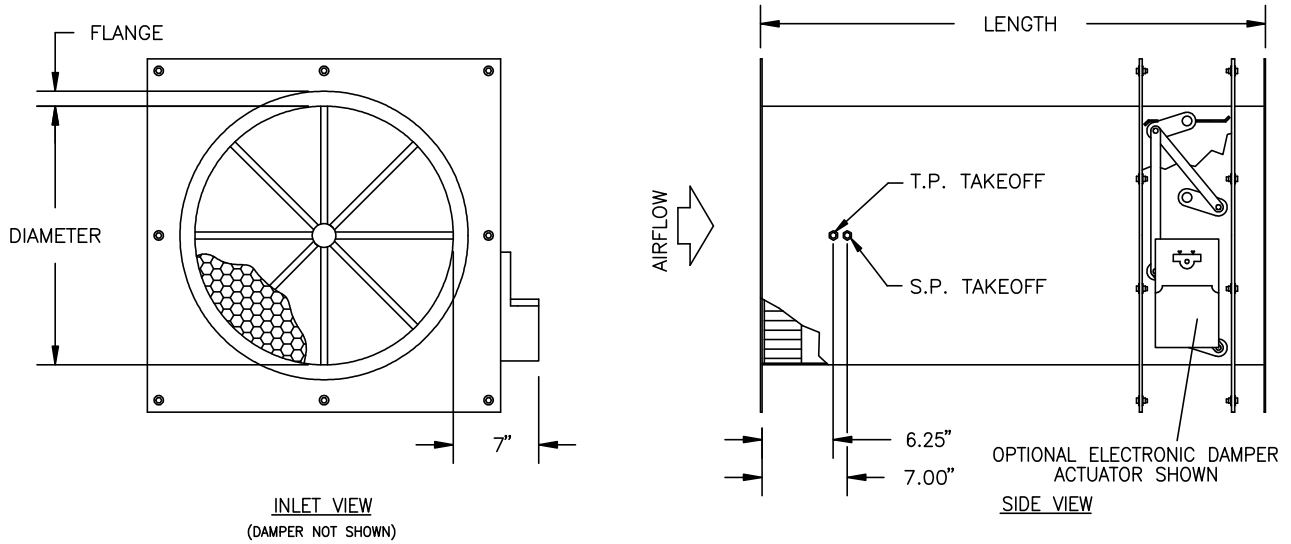
<b>Casing.</b>	18 gauge Type 304 stainless steel, spot welded casing seams.
<b>Flanges.</b>	1" flange, 14 gauge Type 304 stainless steel, fusion welded to the casing.
<b>Air Equalizer and Straightener.</b>	Type 304 stainless steel. 3" deep x 1/2" cell.
<b>Total &amp; Static Pressure Header.</b>	Type 316 stainless steel.
<b>Operating Temperature.</b>	Continuous operation to 120°F.
<b>Connection Fittings.</b>	1/4" stainless steel compression type.
<b>Damper Blades.</b>	18 gauge Type 304 stainless steel.
<b>Damper Bearings.</b>	Nylon.
<b>Damper Linkage.</b>	Mechanical linkage (12 gauge galvanized steel).

**OPTIONAL CONSTRUCTION**

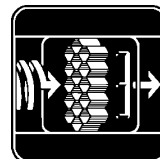
**Damper Actuator.**

- Manual quadrant.
- Direct coupled, fail in position, modulating electronic actuator, 2-10VDC or 4-20mA control signal. Requires 24VAC power supply.
- Pneumatic actuator with pilot positioner, 8-13 psig control signal.     Fail Open     Fail Close
- Pneumatic actuator with pilot positioner and E/P (200 SCIM), 2-10VDC or 4-20mA control signal. Requires 24VAC power and 20 psig instrument air.     Fail Open     Fail Close

**DIMENSIONAL SPECIFICATIONS**



<u>VOLU-trol DIAMETER</u>	<u>LENGTH</u>
8", 10", 12"	20"
14", 16", 18", 20", 22"	24"



AIR MONITOR  
CORPORATION