

# VOLU-probe /2

## INTERNALLY MOUNTED

## AIRFLOW TRAVERSE PROBE



**STANDARD CONSTRUCTION**

**Probe.** 3/4" or 1-3/8" dual chambered. Type 6063 anodized aluminum extrusion.  
**Mounting.** Internal duct mounted. Dual galvanized end mounting plates.  
**Connection Fittings.** 1/4" brass compression type.  
**Operating Temperature.** Continuous operation to 200°F.

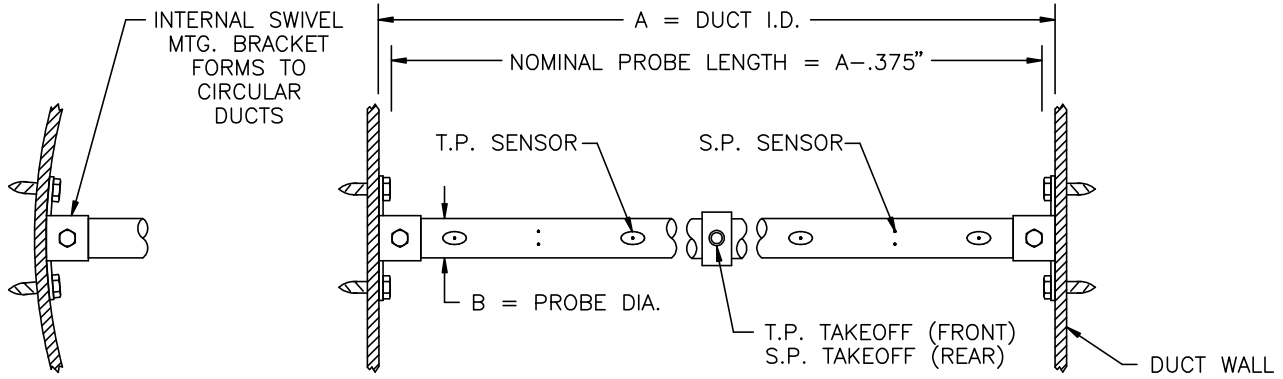
**PERFORMANCE SPECIFICATIONS**

**Accuracy.** 2%; dependent upon quantity and placement of probes to achieve traverse of ducted airflow.  
**Outputs.** Individually averaged signals of total and static pressure.  
**Operating Velocity.** 400-10,000 FPM.  
**Directional Sensitivity.** Not measurably affected by directional airflows with pitch and yaw angles up to 30°.  
**Traverse Pattern.** On an equal area basis for rectangular probes. On an equal concentric area basis for circular probes.  
**Resistance.** Less than 0.1 times the velocity pressure head at probe operating velocity.

**OPTIONAL CONSTRUCTION**

- |  |   |
|--|---|
| <p><b>Protective Coatings.</b></p> <ul style="list-style-type: none"> <li><input type="checkbox"/> Epoxy Polyamide</li> <li><input type="checkbox"/> Polyurethane</li> </ul> | <p><b>Connection Fittings.</b></p> <ul style="list-style-type: none"> <li><input type="checkbox"/> 3/8" brass compression type</li> <li><input type="checkbox"/> Brass barbed for 1/4" OD tubing</li> <li><input type="checkbox"/> Brass barbed for 3/8" OD tubing</li> </ul> |
|--|---|

**DIMENSIONAL SPECIFICATIONS**



DIMENSIONAL CHART			
A"	B"	C"	D"
8-48	.75	.91	2.50
>48-144	1.38	1.55	3.13

