

# VOLU-probe / FI

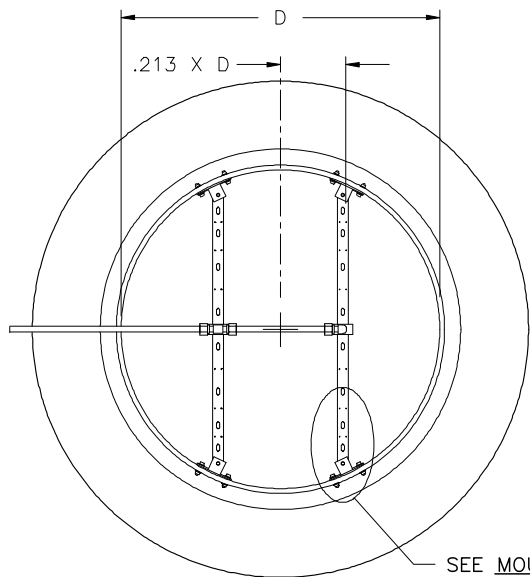
## FAN INLET AIRFLOW TRAVERSE PROBE

- VANE AXIAL
- FAN INLETS 20" IN DIAMETER AND LARGER

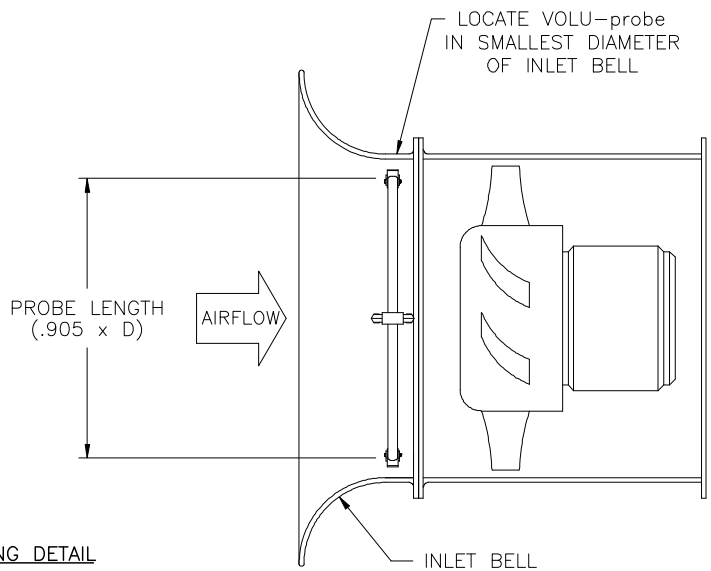
**STANDARD CONSTRUCTION**

**Probe.** 3/4" tube for fan inlets 20" to 48" in diameter. 1-3/8" tube for fan inlets larger than 48".  
**Connection Fittings.** Type 6063 anodized aluminum dual chambered extrusion.  
**Operating Temperature.** 1/4" brass compression type. Continuous operation to 200°F.

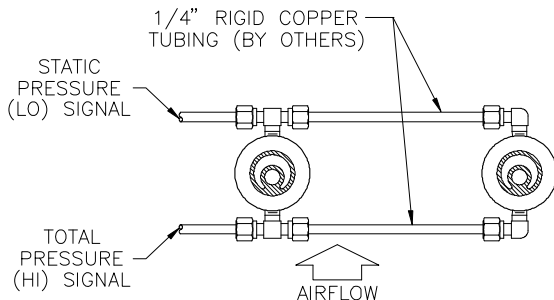
**DIMENSIONAL SPECIFICATIONS**



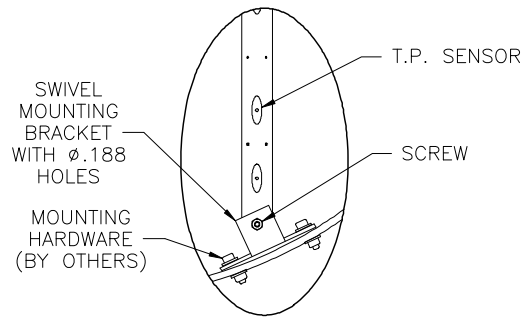
INLET VIEW



INLET SECTION VIEW



SIGNAL CONNECTION DETAIL



MOUNTING DETAIL

