

# ELECTRA-flo/FI

## FAN INLET APPLICATIONS

### THERMAL AIR FLOW SYSTEM

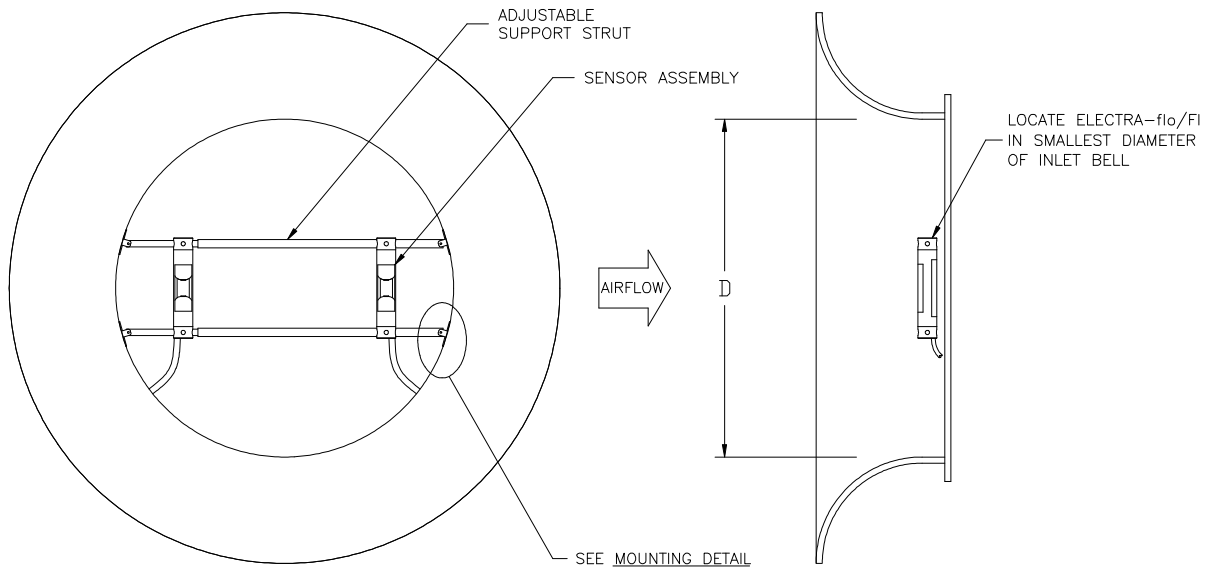
**STANDARD CONSTRUCTION**

Probe.	Type 6063 anodized aluminum. 1-1/8" diameter.
Sensor Assembly.	Injection molded polycarbonate.
Sensor Type.	Sealed thermistor.
Sensor Signal Processing.	Microprocessor in each sensor node, 12 bit A/D conversion.
Mounting.	Stainless steel, tube-in-tube telescoping support struts. Stainless steel mounting brackets.
Probe to Transmitter Signal Connection.	Single cable with RJ-45 connector. Standard length 10'. Optional lengths 50' and 100'.
Number of Sensors Per Inlet:	2

**PERFORMANCE SPECIFICATIONS**

Individual Sensor Accuracy.	2% of reading
Inlet Accuracy.	3-10% of actual airflow, as installed. 2-3% of actual airflow, with field adjustment
Sensor Temperature Accuracy.	±0.1°F
Number of Calibration Points Per Sensor.	6
Velocity Calibration Range.	0 to 10,000 FPM
Humidity Range.	0 to 95% RH, non condensing

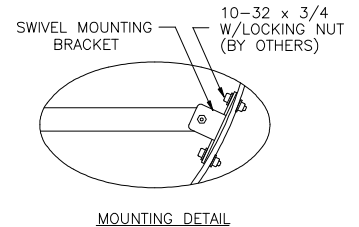
**DIMENSIONAL INFORMATION**



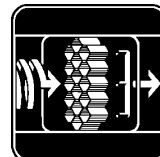
INLET FRONT VIEW

INLET SECTION VIEW

Range Designator	A	B	C	D	E	F	G	H
Min Inlet Diameter	10.00"	12.00"	14.00"	17.00"	21.00"	27.00"	36.00"	48.00"
Max Inlet Diameter	11.99"	13.99"	16.99"	20.99"	26.99"	35.99"	47.99"	64.00"



MOUNTING DETAIL



**AIR MONITOR CORPORATION**

P.O. Box 6358 • Santa Rosa, CA 95406 • (707) 544-2706 • (707) 526-2825 Fax  
 www.airmonitor.com • amcsales@airmonitor.com