

ELECTRA-flo

THERMAL AIR FLOW TRANSMITTER

Plus Series

OPTIONS	Enclosure	Interconnect Cable	Network Communication	Certification	Mounting
	<input type="checkbox"/> NEMA 1 (std)	<input type="checkbox"/> 10' (std)	<input type="checkbox"/> None (std)	<input type="checkbox"/> Standard	<input type="checkbox"/> Remote (std)
	<input type="checkbox"/> NEMA 12	<input type="checkbox"/> 50'	<input type="checkbox"/> LonWorks®	<input type="checkbox"/> NIST Traceable	<input type="checkbox"/> Station
	<input type="checkbox"/> NEMA 4	<input type="checkbox"/> 100'	<input type="checkbox"/> BACnet®		

SPECIFICATIONS

Maximum Number of Sensors. 32 per probe array or measuring station

Display. Backlit graphical LCD. 3/4" x 2-1/2" display size. Field selectable in U.S. or S.I. units for velocity/flow and temperature.

Configuration Access. By means of enclosure cover mounted membrane keypad. Password protected.

Power Supply. 24VAC (20-28VAC) or 24VDC (20-40VDC), with automatic selection.

Power Consumption. 18-70VA, dependent upon the quantity (1 to 32) of sensing points in the probe array or station.

Circuit Protection. Power input is isolated, fused, and reverse polarity protected.

Analog Outputs. Dual outputs, field configurable via jumpers for 0-5VDC, 0-10VDC, or 4-20mADC.

Analog Output Scaling. Field adjustable digital scaling.
Airflow Default: 0 to 5,000 FPM
Temperature Default: 0 to 140°F

Analog Output Resolution. 0.02%

Analog Output Filtering. Field adjustable digital low pass filter.

Network Output Communication. Optional LonWorks® Free Topology or BACnet®

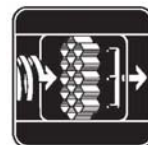
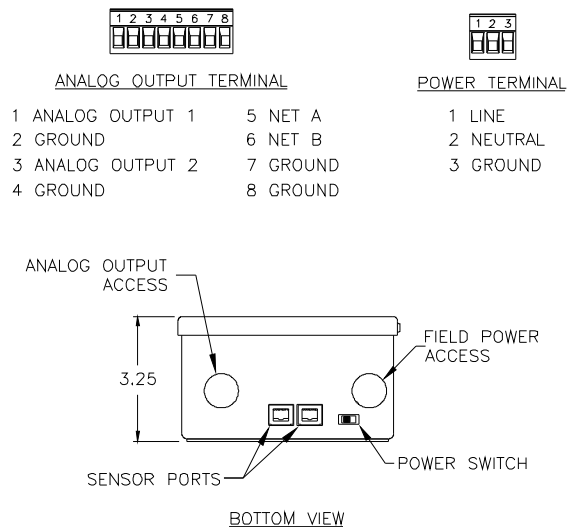
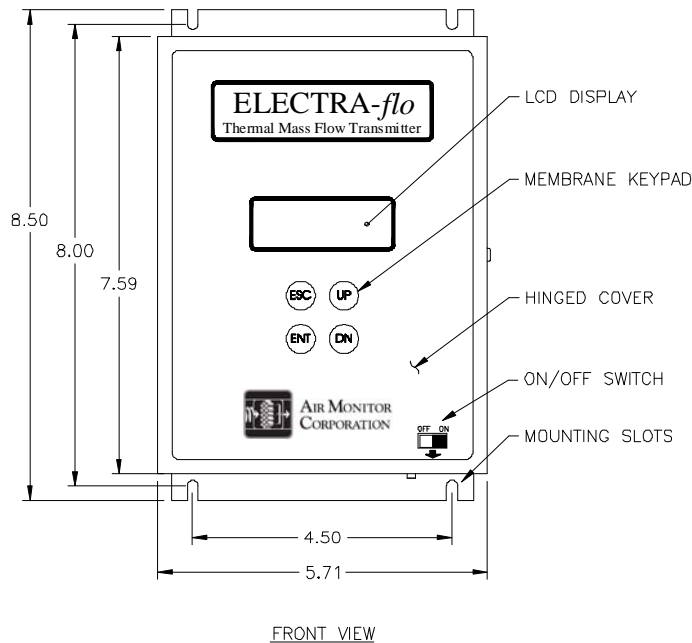
Humidity Limits. 0 to 95% RH, non-condensing

Temperature Limits.
-20°F to 180°F Storage
-20°F to 140°F Operating

Electrical Connections. Terminal strips with plug-in connectors.

Enclosure. NEMA 1 aluminum with hinged cover.

DIMENSIONAL INFORMATION



AIR MONITOR CORPORATION