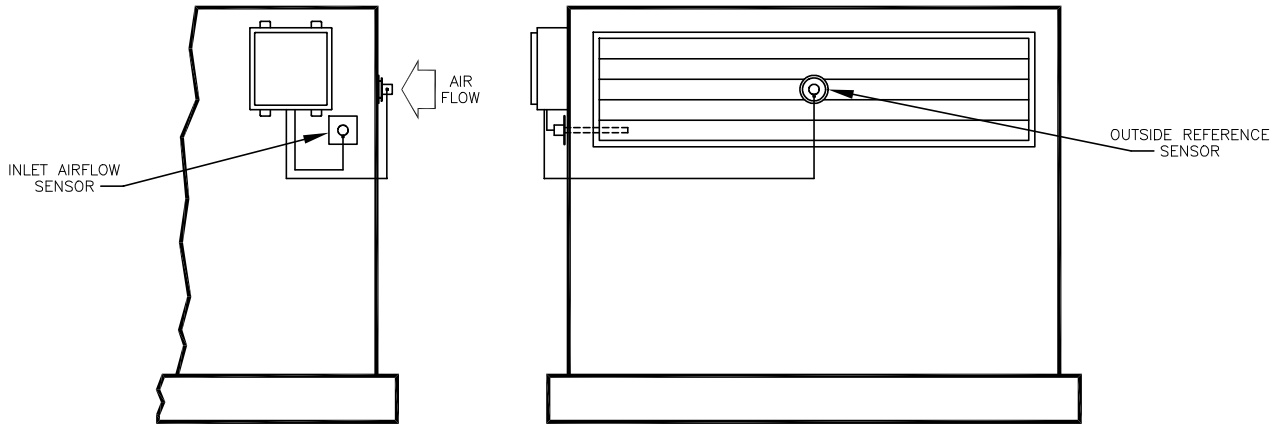


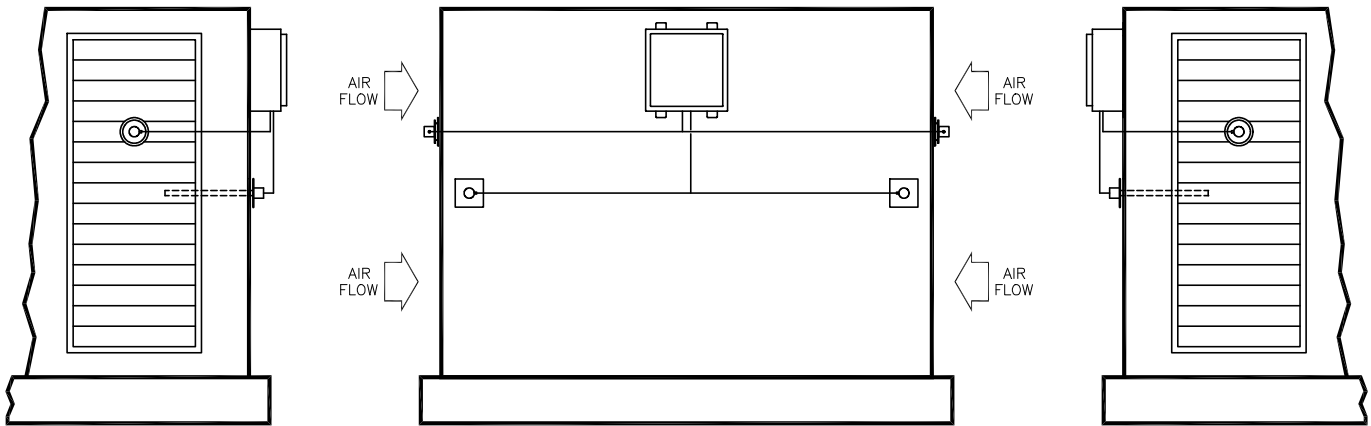
# VOLU-flo / OAM

## Outside Air Monitor – Application Guide

The VOLU-flo/OAM Monitor/Controller can be applied to most single and dual inlet package air handlers, as well as many built-up system inlets. Depicted below are typical single and dual inlet configurations. Contact the Factory with any unique configuration, or those that do not meet the stated Minimum Installation Requirements.



**Single Inlet Configuration**



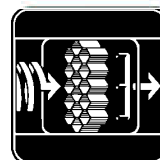
**Dual Inlet Configuration**

**MINIMUM INSTALLATION REQUIREMENTS**

**General Requirement.** The VOLU-flo/OAM was designed for installation on packaged air handlers and built-up systems where the outside air intake is outfitted with an inlet louver or some other fixed resistance device that produces at least 0.06" w.c. pressure drop at 600 afpm. For systems not so equipped, contact the Factory for application suitability.

**Outside Reference Sensor.** The Outside Reference Sensor is to be located upstream of, and mounted in the center of, the inlet louver or fixed resistance device.

**Inlet Airflow Sensor.** The Inlet Airflow Sensor must be mounted downstream of the inlet louver or fixed resistance device and upstream of the outside air intake control damper(s).



AIR MONITOR  
CORPORATION