

LO-flo

PITOT TRAVERSE STATION

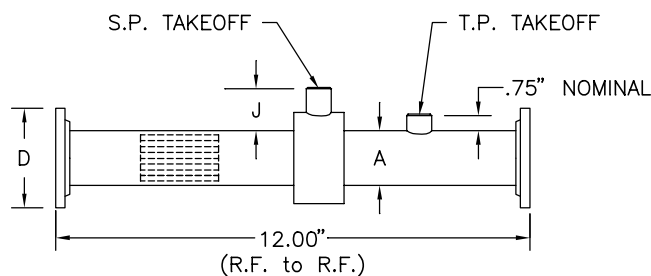
MODEL F

STANDARD CONSTRUCTION

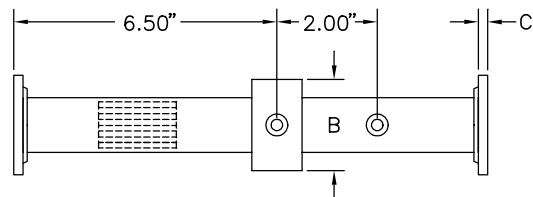
Casing.	Schedule 5, Type 316 stainless steel pipe.
Flanges.	150 lb. raised face, Type 316 stainless steel.
Air Equalizer and Straightener.	Type 316 stainless steel.
Total Pressure Header.	Type 316 stainless steel tubing.
Static Pressure Chamber.	Type 316 stainless steel.
Casing Depth.	See Dimensional Specifications below.
Connection Fittings.	¼" FPT.
Operating Temperature.	Continuous operation to 900°F.
Resistance to Flow.	0.3 times the velocity head (pressure) of the design flow rate.
Maximum Static Pressure.	20 psig.

DIMENSIONAL SPECIFICATIONS

STATION NOMINAL SIZE	A O.D.	A I.D.	B O.D.	FLANGE SIZE	C ASA 150# RAISED FACE	D ASA 150# RAISED FACE	NO. OF TOTAL PRESSURE SENSORS	NO. OF STATIC PRESSURE TAPS	J NOMINAL	EQUALIZER/STRAIGHTENER
.75"	1.05	.92	1.66	.75"	.50	3.88	4	4	1.06	1/8" x2" DEEP
1"	1.315	1.185	1.90	1"	.56	4.25	4	4	1.05	1/8" x2" DEEP
1.25"	1.66	1.53	2.375	1.25"	.62	4.62	6	6	1.11	1/8" x2" DEEP
1.50"	1.90	1.77	3.50	1.50"	.69	5.00	6	6	1.55	1/8" x2" DEEP
2"	2.375	2.245	3.50	2"	.75	6.00	8	6	1.32	1/8" x2" DEEP
3"	3.50	3.334	4.50	3"	.94	7.50	14	8	1.25	1/8" x2" DEEP
4"	4.50	4.334	5.563	4"	.94	9.00	14	8	1.28	1/4" x3" DEEP
5"	5.563	5.345	6.625	5"	.94	10.00	14	8	1.28	1/4" x3" DEEP
6"	6.625	6.407	7.625	6"	1.00	11.00	14	8	1.25	1/4" x3" DEEP
8"	8.625	8.407	9.625	8"	1.12	13.50	14	8	1.25	1/4" x3" DEEP



SIDE VIEW



TOP VIEW

