

SUBMITTAL SHEET

LO-flo

PITOT TRAVERSE STATION

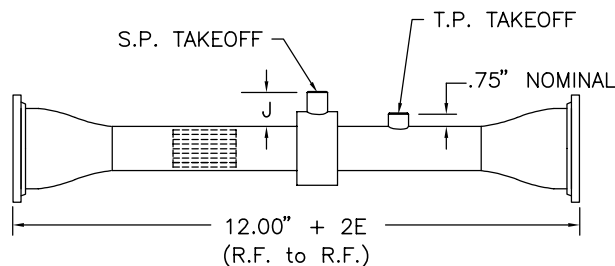
MODEL FR

STANDARD CONSTRUCTION

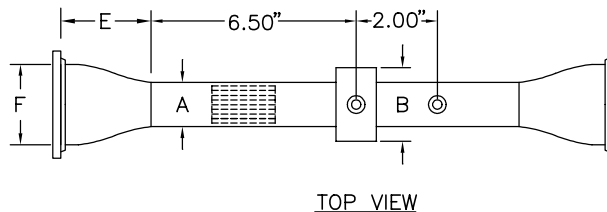
Casing.	Schedule 5, Type 316 stainless steel pipe.
Flanges.	150 lb. raised face, Type 316 stainless steel.
Air Equalizer and Straightener.	Type 316 stainless steel.
Total Pressure Header.	Type 316 stainless steel tubing.
Static Pressure Chamber.	Type 316 stainless steel.
Casing Depth.	See Dimensional Specifications below.
Connection Fittings.	¼" FPT.
Operating Temperature.	Continuous operation to 900°F.
Resistance to Flow.	0.3 times the velocity head (pressure) of the design flow rate.
Maximum Static Pressure.	20 psig.

DIMENSIONAL SPECIFICATIONS

STATION NOMINAL SIZE	A O.D.	A I.D.	B O.D.	FLANGE SIZE	REDUCER OPTION PIPE SIZE	E REDUCER OPTION	F REDUCER OPTION	NO. OF TOTAL PRESSURE SENSORS	NO. OF STATIC PRESSURE TAPS	J NOMINAL	EQUALIZER/STRAIGHTENER
.75"	1.05	.92	1.66	1.00" 1.25" 1.50"	1.00" 1.25" 1.50"	2.00 2.00 2.00	1.315 1.660 1.900	4	4	1.06	1/8" x 2" DEEP
1"	1.315	1.185	1.90	1.50" 2.00"	1.50" 2.00"	2.50 3.00	1.900 2.375	4	4	1.05	1/8" x 2" DEEP
1.25"	1.66	1.53	2.375	2.00" 2.50"	2.00" 2.50"	3.00 3.50	2.375 2.975	6	6	1.11	1/8" x 2" DEEP
1.50"	1.90	1.77	3.50	2.00" 2.50" 3.00"	2.00" 2.50" 3.00"	3.00 3.50 3.50	2.375 2.875 3.500	6	6	1.55	1/8" x 2" DEEP
2"	2.375	2.245	3.50	3.00" 3.50" 4.00"	3.00" 3.50" 4.00"	3.50 4.00 4.00	3.500 4.000 4.500	8	6	1.32	1/8" x 2" DEEP
3"	3.50	3.334	4.50	4.00" 5.00" 6.00"	4.00" 5.00" 6.00"	4.00 5.00 5.50	4.500 5.562 6.625	14	8	1.25	1/8" x 2" DEEP
4"	4.50	4.334	5.563	6.00" 8.00"	6.00" 8.00"	5.50 6.00	6.625 8.625	14	8	1.28	1/4" x 3" DEEP
5"	5.563	5.345	6.625	6.00" 8.00"	6.00" 8.00"	5.50 6.00	6.625 8.625	14	8	1.28	1/4" x 3" DEEP
6"	6.625	6.407	7.625	8.00"	8.00"	6.00	8.625	14	8	1.25	1/4" x 3" DEEP



SIDE VIEW



TOP VIEW

