

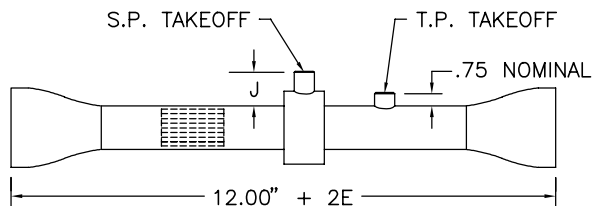
# LO-flo PITOT TRAVERSE STATION MODEL R

**STANDARD CONSTRUCTION**

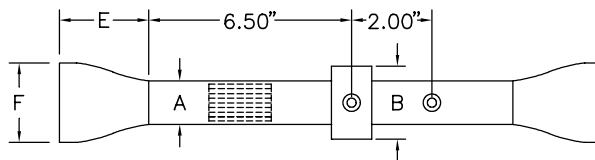
<b>Casing.</b>	Schedule 5, Type 316 stainless steel pipe.
<b>Air Equalizer and Straightener.</b>	Type 316 stainless steel.
<b>Total Pressure Header.</b>	Type 316 stainless steel tubing.
<b>Static Pressure Chamber.</b>	Type 316 stainless steel.
<b>Casing Depth.</b>	See Dimensional Specifications below.
<b>Connection Fittings.</b>	¼" FPT.
<b>Operating Temperature.</b>	Continuous operation to 900°F.
<b>Resistance to Flow.</b>	0.3 times the velocity head (pressure) of the design flow rate.
<b>Maximum Static Pressure.</b>	20 psig.

**DIMENSIONAL SPECIFICATIONS**

STATION NOMINAL SIZE	A O.D.	A I.D.	B O.D.	REDUCER OPTION PIPE SIZE	E REDUCER OPTION	F REDUCER OPTION	NO. OF TOTAL PRESSURE SENSORS	NO. OF STATIC PRESSURE TAPS	J NOMINAL	EQUALIZER/STRAIGHTENER
.75"	1.05	.92	1.66	1.00" 1.25" 1.50"	2.00 2.00 2.00	1.315 1.660 1.900	4	4	1.06	1/8" x2" DEEP
1"	1.315	1.185	1.90	1.50" 2.00"	2.50 3.00	1.900 2.375	4	4	1.05	1/8" x2" DEEP
1.25"	1.66	1.53	2.375	2.00" 2.50"	3.00 3.50	2.375 2.975	6	6	1.11	1/8" x2" DEEP
1.50"	1.90	1.77	3.50	2.00" 2.50" 3.00"	3.00 3.50 3.50	2.375 2.875 3.500	6	6	1.55	1/8" x2" DEEP
2"	2.375	2.245	3.50	3.00" 3.50" 4.00"	3.50 4.00 4.00	3.500 4.000 4.500	8	6	1.32	1/8" x2" DEEP
3"	3.50	3.334	4.50	4.00" 5.00" 6.00"	4.00 5.00 5.50	4.500 5.562 6.625	14	8	1.25	1/8" x2" DEEP
4"	4.50	4.334	5.563	6.00" 8.00"	5.50 6.00	6.625 8.625	14	8	1.28	1/4" x3" DEEP
5"	5.563	5.345	6.625	6.00" 8.00"	5.50 6.00	6.625 8.625	14	8	1.28	1/4" x3" DEEP
6"	6.625	6.407	7.625	8.00"	6.00	8.625	14	8	1.25	1/4" x3" DEEP



SIDE VIEW



TOP VIEW

