

# Y-SHAPED END SUPPORT BRACKET FOR MOUNTING INSIDE CARBON STEEL DUCTS

**STANDARD CONSTRUCTION**

**Bracket.** 14 ga. (0.080) carbon steel sheet.  
**Plate.** 10 ga. (0.135) carbon steel plate.

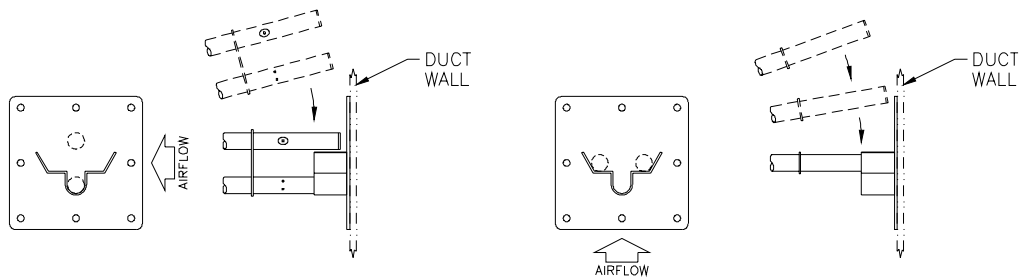
**FUNCTION**

This bracket provides an alternate means for guide-in and securing the end of stainless steel VOLU-probes inside carbon steel ducts. Bracket may be bolted in place or welded directly to duct wall. Bracket may be used for Rectangular ducts of all sizes, or Circular ducts 74" diameter or greater.

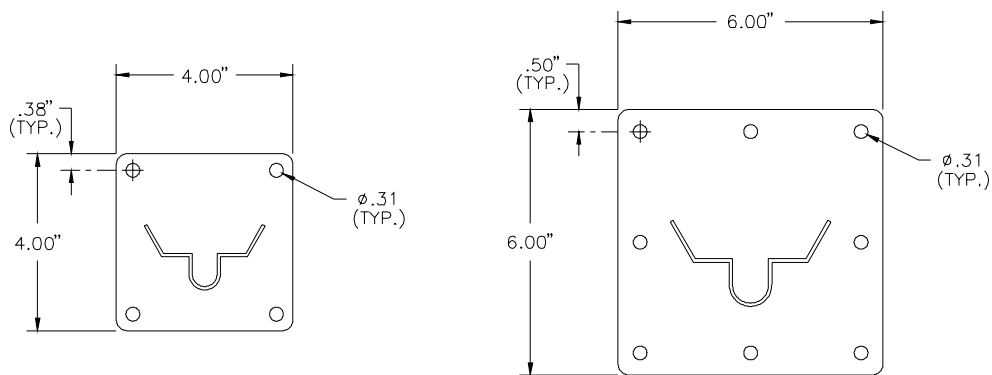
**OPTIONAL CONSTRUCTION**

Stainless steel bracket and plate.

**DIMENSIONAL SPECIFICATIONS (inches)**



BRACKET DESIGN ACCOMODATES HORIZONTAL OR VERTICAL PROBE INSTALLATIONS



FOR PROBES 12-24" LONG

FOR PROBES >24-240" LONG

