

# STAT-probe / 1SS – INDUSTRIAL EXTERNALLY MOUNTED STAINLESS STEEL AIRFLOW TRAVERSE PROBE

**STANDARD CONSTRUCTION**

**Probe.** ½" or ¾" tube sensing manifold, threaded end support, washer and nut, mounting plate with signal takeoff connection, and identification tag, all fabricated of Type 316 stainless steel. Neoprene gaskets included.

**Mounting.** External duct mounted. Threaded end support for probes greater than 18" long.

**Connection Fitting.** ½" FPT stainless steel.

**Operating Temperature.** Continuous operation to 900°F.

**PERFORMANCE SPECIFICATIONS**

**Accuracy.** 2-3%; dependent upon placement of probe to achieve traverse of ducted airflow.

**Outputs.** Averaged signal of static pressure.

**Operating Velocity.** 100-10,000 FPM.

**Directional Sensitivity.** Not measurably affected by directional airflows with pitch and yaw angles up to 30°.

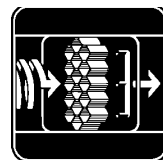
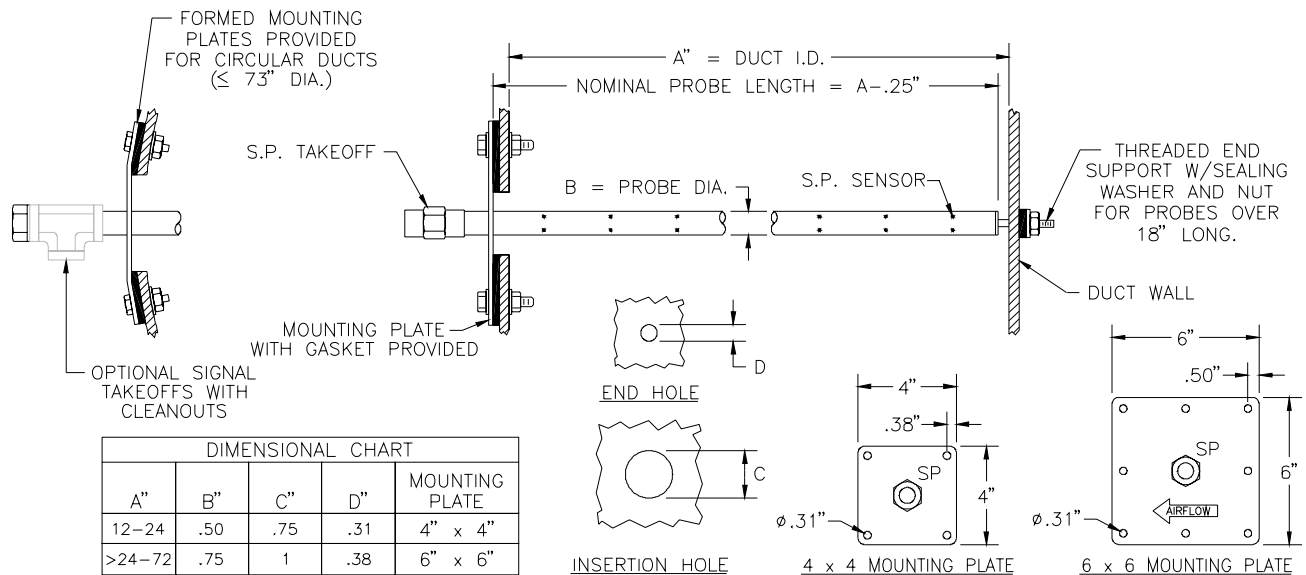
**Traverse Pattern.** On an equal area basis for rectangular probes. On an equal concentric area basis for circular probes.

**Resistance.** Less than 0.1 times the velocity pressure head at probe operating velocity.

**OPTIONAL CONSTRUCTION**

- |   |   |   |
|---|---|---|
| <p><b>Connection Fitting.</b></p> <p><input type="checkbox"/> ¼" Compression</p> <p><input type="checkbox"/> ½" Compression</p> | <p><b>Signal Connection.</b></p> <p><input type="checkbox"/> Cleanout</p> | <p><b>150 lb Mounting Flange.</b></p> <p><input type="checkbox"/> 4" raised face mounting flange, Type 316 stainless steel.</p> |
|---|---|---|
- High Temperature Gaskets.**
- Silicone; for continuous operation between 200°F and 400°F.
- Fiber; for continuous operation between 400°F and 800°F.

**DIMENSIONAL SPECIFICATIONS**



AIR MONITOR  
CORPORATION

P.O. Box 6358 • Santa Rosa, CA 95406 • (707) 544-2706 • (707) 526-2825 Fax