

# VOLU-probe / SM with MOUNTING PLATE

## AIRFLOW TRAVERSE PROBE

### FOR CLEAN AIR APPLICATIONS ONLY

**STANDARD CONSTRUCTION**

**Probe.** Single 1/2" or 3/4" O.D. tube sensing manifold, mounting plate, identification tag, neoprene gasket.  
**Material.** 316 Stainless Steel Tube  
**Signal Connections.** 1/4"-18 FPT

**PERFORMANCE SPECIFICATIONS**

**Accuracy.** 2-3%; dependent upon quantity and placement of probes to achieve traverse of ducted airflow.  
**Outputs.** Individually averaged signals of total and static pressure.  
**Operating Velocity.** 400 - 10,000 FPM.  
**Operating Temperature.** Continuous operation to 900°F.  
**Traverse Pattern.** Rectangular Ducts: Equal Area.    Circular Ducts: Equal Concentric Area.

**OPTIONAL CONSTRUCTION**

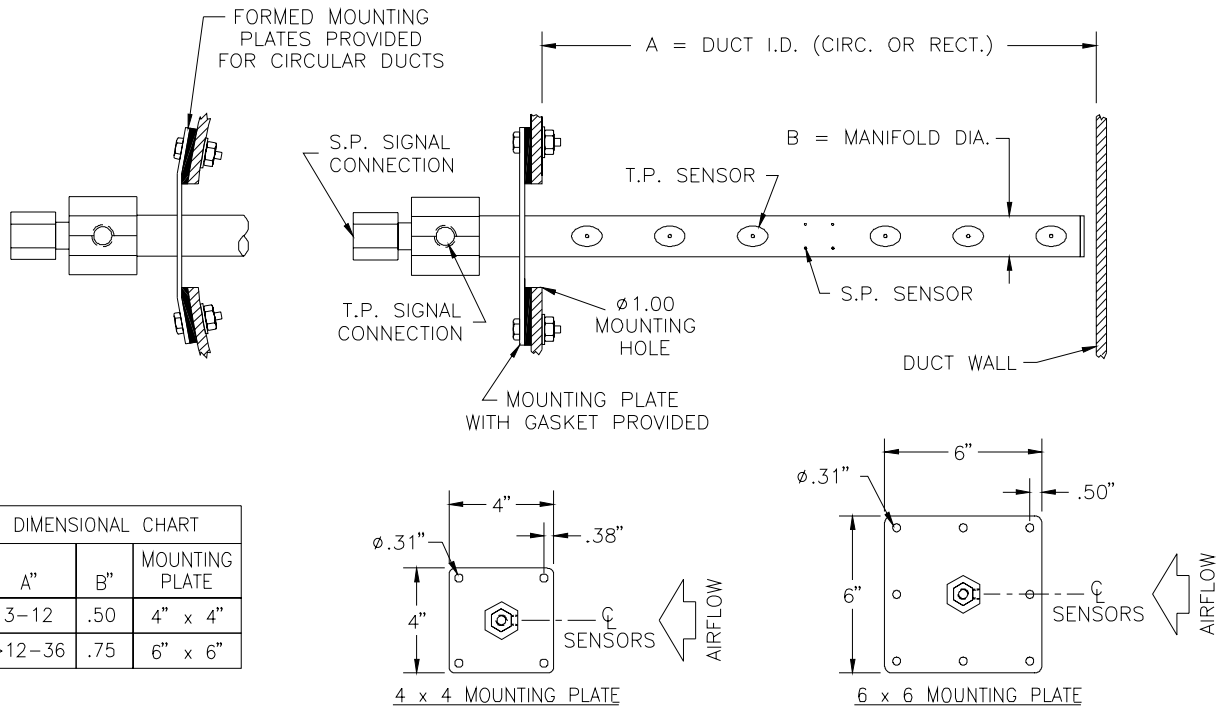
**Signal Connections**

1/8"-27 FPT

**High Temperature Gaskets**

- Silicone, for continuous operation between 200°F and 400°F.
- Ceramic Fiber, for continuous operation between 400°F and 900°F.

**DIMENSIONAL SPECIFICATIONS**



DIMENSIONAL CHART		
A"	B"	MOUNTING PLATE
3-12	.50	4" x 4"
>12-36	.75	6" x 6"

