

# VOLU-probe / SM with THREADED FITTING

## AIRFLOW TRAVERSE PROBE

### FOR CLEAN AIR APPLICATIONS ONLY

**STANDARD CONSTRUCTION**

**Probe.** Single 1/2" or 3/4" O.D. tube sensing manifold, threaded mounting fitting, and identification tag.  
**Material.** 316 Stainless Steel Tube  
**Signal Connections.** 1/4"-18 FPT

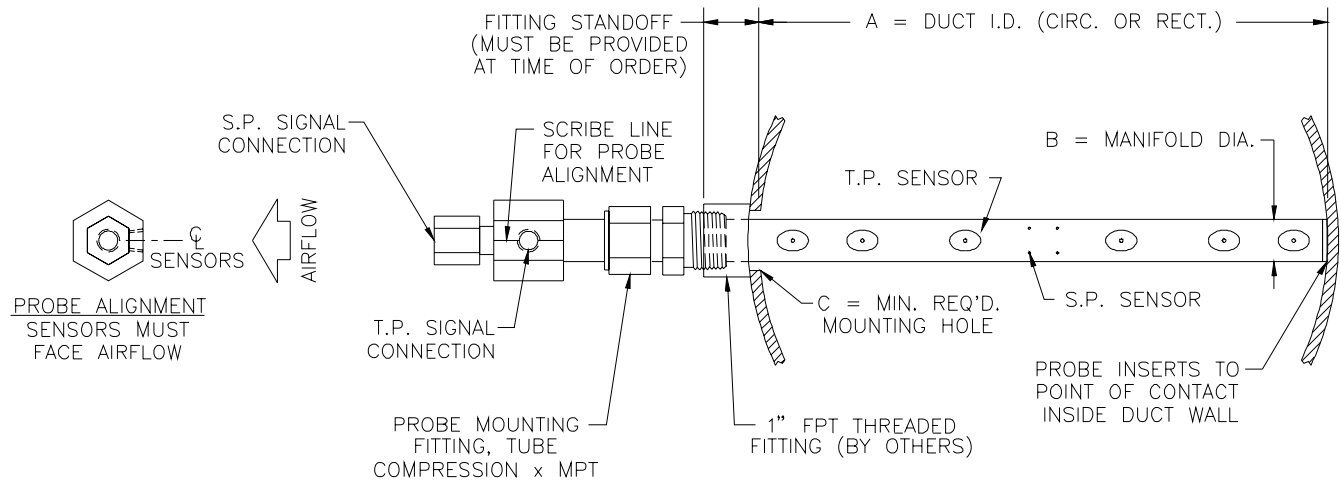
**PERFORMANCE SPECIFICATIONS**

**Accuracy.** 2-3%; dependent upon quantity and placement of probes to achieve traverse of ducted airflow.  
**Outputs.** Individually averaged signals of total and static pressure.  
**Operating Velocity.** 400 - 10,000 FPM.  
**Operating Temperature.** Continuous operation to 900°F.  
**Traverse Pattern.** Rectangular Ducts: Equal Area.    Circular Ducts: Equal Concentric Area.

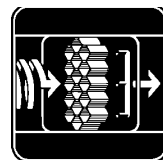
**OPTIONAL CONSTRUCTION**

<b>Signal Connections</b>	<b>Fitting Standoff (Inches)</b>
<input type="checkbox"/> 1/8"-27 FPT	<input type="checkbox"/> .75" (standard)
	<input type="checkbox"/> Other: _____

**DIMENSIONAL SPECIFICATIONS**



DIMENSIONAL CHART		
A"	B"	C"
3-12	.50	.625
>12-36	.75	.875



AIR MONITOR CORPORATION