

CAMS

COMBUSTION AIRFLOW MANAGEMENT SYSTEM

STANDARD CONSTRUCTION

Brass and Copper Construction

All wetted tubing, fittings, and valves constructed of copper and/or brass.
Enclosure is NEMA 4 painted steel.
External connection fittings are stainless steel FPT.

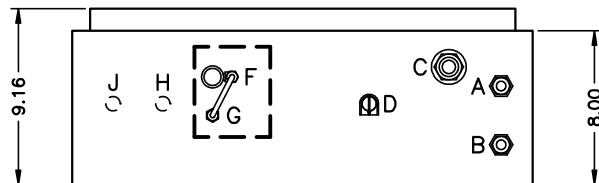
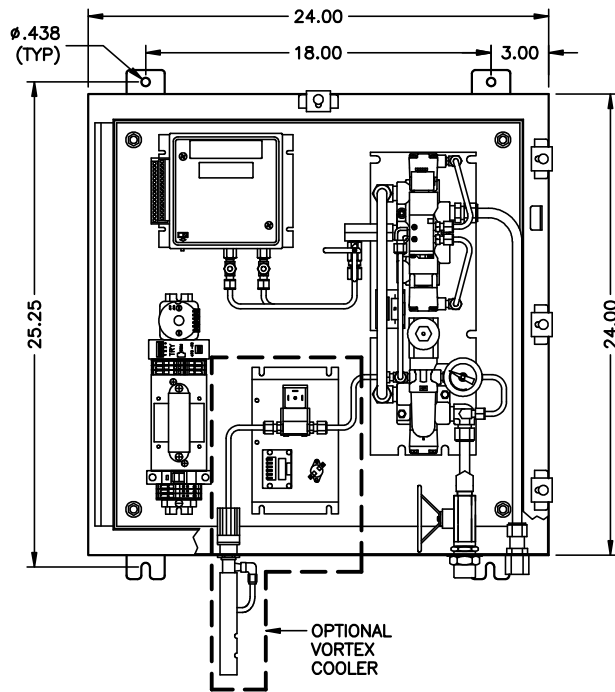
OPTIONAL CONSTRUCTION

NEMA 4X Stainless Steel Enclosure
 Vortex Cooler. Requires 80-100 psi air supply
 Enclosure Heater. Requires 120VAC power supply
 Viewing window

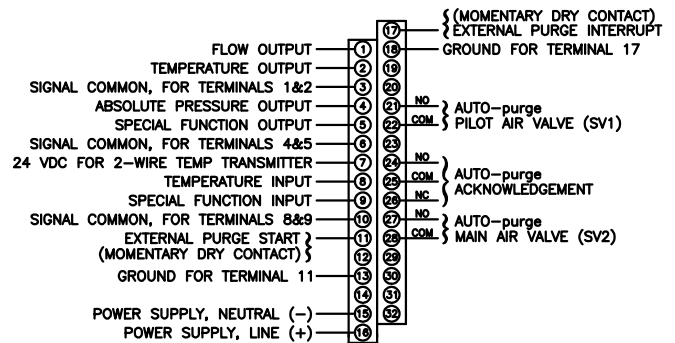
Power Supply
 24VAC, 35VA
 24VDC, 20VA
 120VAC, 42VA

Capacity
 Standard
 Low - Model SP
 High - Model HP

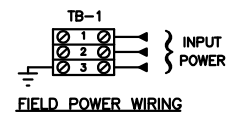
DIMENSIONAL SPECIFICATIONS



BOTTOM VIEW



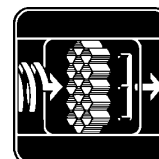
FIELD CAMM WIRING



FIELD POWER WIRING

CONNECTION CODE:

- A. STATIC PRESSURE (LO) SIGNAL 1/2" FPT
- B. TOTAL PRESSURE (HI) SIGNAL 1/2" FPT
- C. SUPPLY AIR 80-125 PSIG 1/2" FPT
- D. CABINET VENT VENT FTG.
- F. VORTEX COOLER MOUNTING HOLE Ø1.125" I.D. OPTIONAL
- G. VORTEX COOLER AIR SUPPLY 1/4" FPT
- H. ELECTRICAL CONNECTION POWER WIRING 3/4" K.O. (BY OTHERS)
- J. ELECTRICAL CONNECTION SIGNAL WIRING 3/4" K.O. (BY OTHERS)



AIR MONITOR
CORPORATION