

AUTO-purge III – High Capacity

STANDARD CONSTRUCTION

- | | |
|--|--|
| <input type="checkbox"/> Brass and Copper Construction | All wetted tubing, fittings, and valves constructed of copper and/or brass. Enclosure is NEMA 4 painted steel. External connection fittings are stainless steel FPT. |
| <input type="checkbox"/> Stainless Steel Construction | All wetted tubing, fittings, and valves are constructed of 316 stainless steel. Enclosure is NEMA 4 painted steel. External connection fittings are stainless steel FPT. |

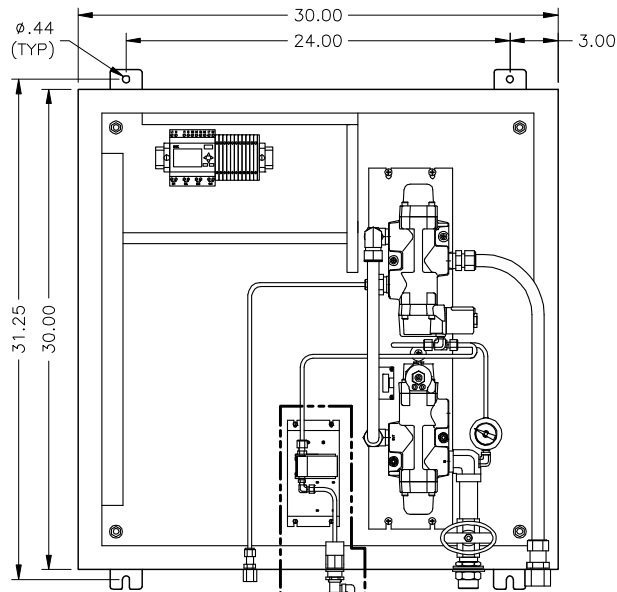
OPTIONAL CONSTRUCTION

- NEMA 4X Stainless Steel Enclosure
- Vortex Cooler. Requires 80-100 psi air supply*
- Enclosure Heater, Requires 120VAC power supply**
- R-1 Relay for purge management

SV-1A,1B & SV2	<u>In Rush</u>	<u>Hold</u>
<input type="checkbox"/> 24VAC	74VA	62VA
<input type="checkbox"/> 24VDC	28W	28W
<input type="checkbox"/> 120VAC	77VA	65VA

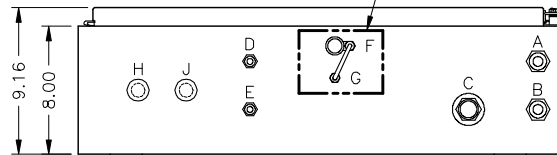
* Add 21VA In Rush, 12VA Hold (8W) for 400 BTUH @ 100 psig ≤70°F
 ** Add 3.2A @ 120VAC for 400 watt heater

DIMENSIONAL SPECIFICATIONS

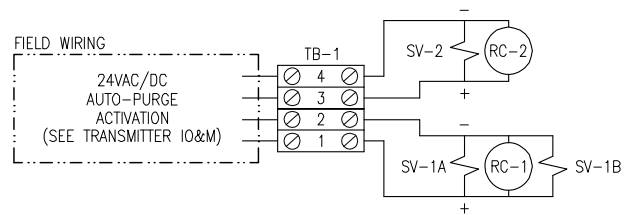
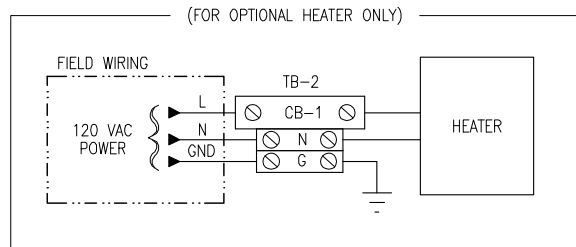


INTERIOR VIEW

OPTIONAL VORTEX COOLER
(OPTIONAL HEATER NOT SHOWN)



BOTTOM VIEW



FIELD WIRING TERMINALS

CONNECTION CODE

A. STATIC PRESSURE (LO) SIGNAL FROM FLOW ELEMENT	3/4" (F)NPT
B. TOTAL PRESSURE (HI) SIGNAL FROM FLOW ELEMENT	3/4" (F)NPT
C. SUPPLY AIR 80 - 125 PSIG	3/4" (F)NPT
D. STATIC PRESSURE TO TRANSMITTER	1/4" (F)NPT
E. TOTAL PRESSURE TO TRANSMITTER	1/4" (F)NPT
F. VORTEX COOLER MOUNTING HOLE	N/A
G. VORTEX COOLER AIR SUPPLY	N/A
H. ELECTRICAL CONNECTION POWER WIRING	1/2" CONDUIT SEAL
J. ELECTRICAL CONNECTION SIGNAL WIRING	1/2" CONDUIT SEAL

