

AUTO-purge III – High Capacity with Integral Transmitter

STANDARD CONSTRUCTION

- Brass and Copper Construction All wetted tubing, fittings, and valves constructed of copper and/or brass. Enclosure is NEMA 4 painted steel. External connection fittings are stainless steel FPT.
- Stainless Steel Construction All wetted tubing, fittings, and valves constructed of 316 stainless steel. Enclosure is NEMA 4 painted steel. External connection fittings are stainless steel FPT.

OPTIONAL CONSTRUCTION

- NEMA 4X Stainless Steel Enclosure
- Vortex Cooler. Required 80-100 psi air supply*
- Enclosure Heater. Requires 120VAC power supply**
- Purge start and/or purge interrupt pushbuttons
 - Panel mounted
 - Door mounted
- Viewing Window

Power Supply

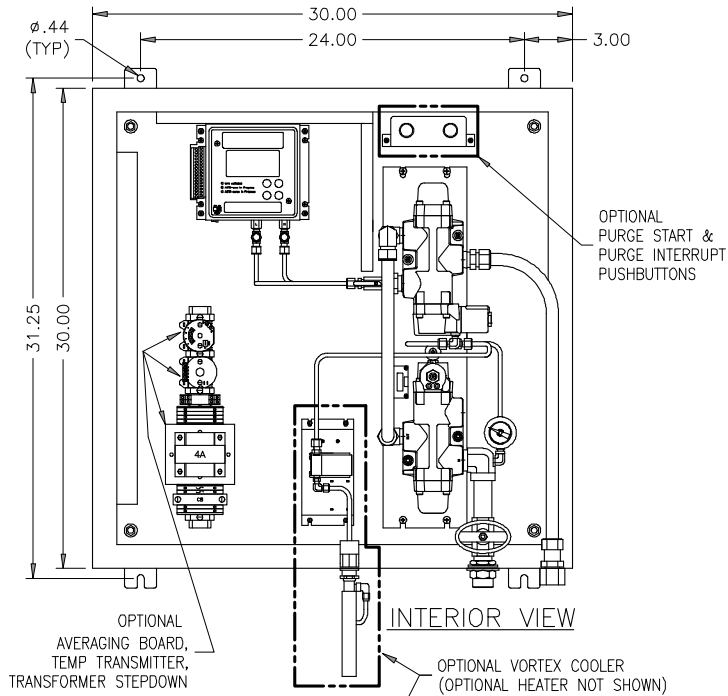
(check one)	<u>In Rush</u>	<u>Hold</u>
<input type="checkbox"/> 24VAC	85VA	73VA
<input type="checkbox"/> 24VDC	37W	37W
<input type="checkbox"/> 120VAC	106VA	92VA

Transmitter Module

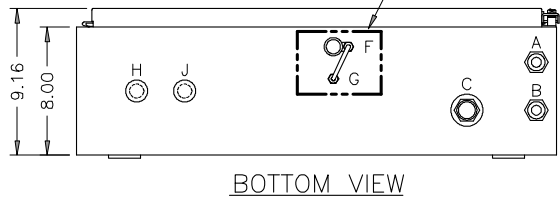
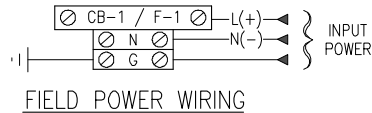
- (check one)
- VELTRON II
 - VEL-trol II
 - MASS-tron II

*Add 21VA In Rush, 12VA Hold (8W) for 400 BTUH @ 100 psig ≤70°F
 **Add 3.2A @ 120VAC for 400 watt heater

DIMENSIONAL SPECIFICATIONS



FOR TRANSMITTER FIELD WIRING DETAILS, REFER TO TRANSMITTER SUBMITTAL SHEET



CONNECTION CODE

- A. STATIC PRESSURE (LO) SIGNAL FROM FLOW ELEMENT 3/4" (F)NPT
- B. TOTAL PRESSURE (HI) SIGNAL FROM FLOW ELEMENT 3/4" (F)NPT
- C. SUPPLY AIR 80 – 125 PSIG 3/4" (F)NPT
- D. NOT APPLICABLE
- E. NOT APPLICABLE
- F. VORTEX COOLER MOUNTING HOLE N/A
- G. VORTEX COOLER AIR SUPPLY N/A
- H. ELECTRICAL CONNECTION POWER WIRING 1/2" CONDUIT SEAL
- J. ELECTRICAL CONNECTION SIGNAL WIRING 1/2" CONDUIT SEAL



AIR MONITOR CORPORATION

P.O. Box 6358 • Santa Rosa, CA 95406 • (707) 544-2706 • (707) 526-2825 Fax
 www.airmonitor.com • amcsales@airmonitor.com