

SOCKET END SUPPORT BRACKET – EXTERNAL FOR MOUNTING OUTSIDE CARBON STEEL DUCTS

STANDARD CONSTRUCTION

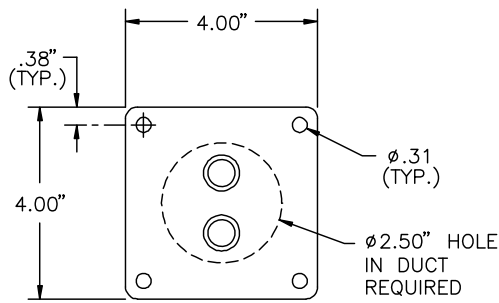
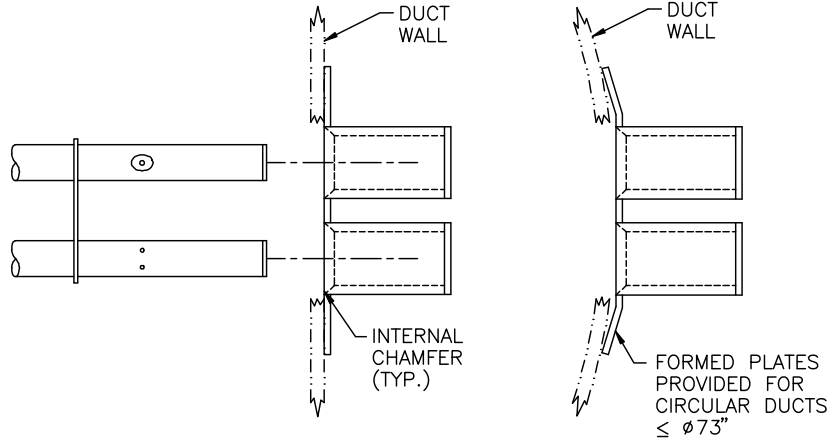
Sockets. Stainless steel tubing.
Plate. 10 ga. (0.135) stainless steel.

FUNCTION

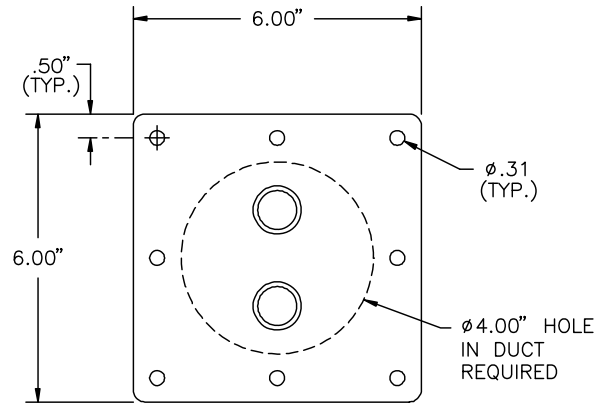
This bracket provides an alternate means for guide-in and securing the end of stainless steel VOLU-probes outside carbon steel ducts. Bracket may be bolted in place or welded directly to duct wall.

DIMENSIONAL SPECIFICATIONS (inches)

SOCKET LENGTH	DUCT SIZE
1"	>18" – 24"
2"	>24" – 120"
3"	>120"



FOR PROBES >18–24" LONG



FOR PROBES >24–240" LONG