

CAMS

SEQUENCE OF OPERATIONS

IDENTIFICATION CODE

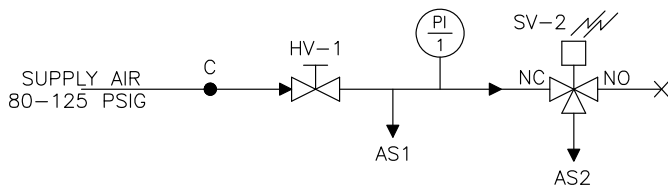
SV-1A	Solenoid Operated (externally piloted) 3-Way Valve, Static (low) Pressure
SV-1B	Solenoid Operated (externally piloted) 3-Way Valve, Total (high) Pressure
SV-2	Solenoid Operated 3-Way Main Air Valve
HV-1	Supply Air Shut Off Valve
PI-1	Gauge, Supply Air Pressure, 0-160 psig
CAMM	Combustion Airflow Management Module

SEQUENCE OF OPERATIONS

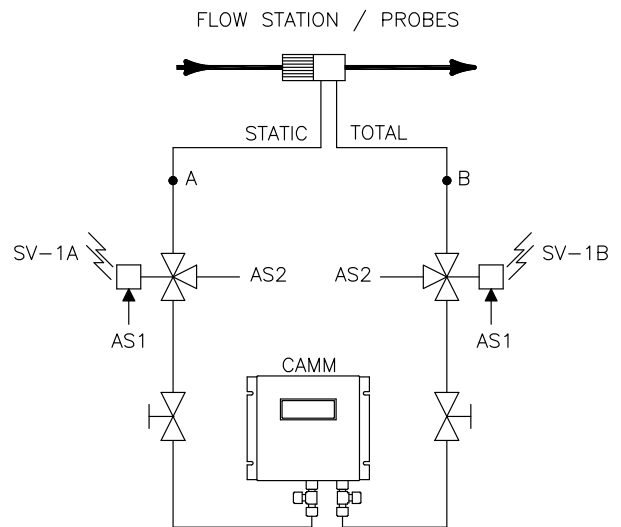
The AUTO-purge sequence is initiated at regular field selectable intervals by the CAMM. When a purge sequence is initiated, the CAMM holds its analog outputs at their last measured values and isolates signal lines to the CAMM from process lines. After signal lines isolation, high pressure purge air (up to 125 psi) is applied to process lines for a preset time interval to clean the sensing orifices of the Total and Static pressure manifolds.

After purge duration, high pressure air supply is cut off and sensing lines depressurize for a preset time period. Next, signal lines to the CAMM are reconnected to process lines and after a short signal recovery period, the CAMM releases its analog outputs hold and resumes normal flow measurement. For more detail on valve activations and time intervals, refer to CAMS Purge Cycle Timing Diagram, SUB-B024.

SCHEMATIC



SUPPLY AIR SCHEMATIC



STATIC & TOTAL PRESSURE SCHEMATIC