

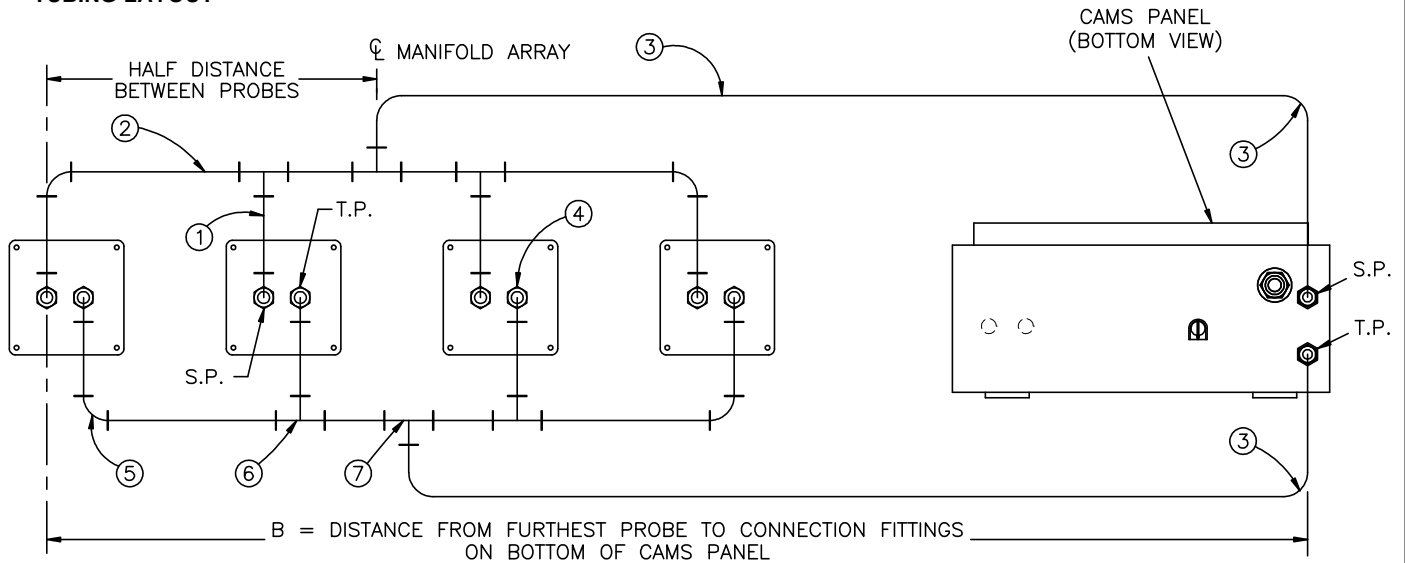
CAMS – High Capacity

TUBING REQUIREMENT FROM AIRFLOW MEASURING PROBES TO THE CAMS PANEL

FUNCTION

This Submittal Sheet specifies the signal tubing sizes and fitting requirements from the connection fittings on the probes to the center of the manifolding arrays, and from the center of the manifolding arrays to the connection fittings on the bottom of the CAMS Panel.

TUBING LAYOUT



| COMPONENT | IF LENGTH "B" IS 25 FEET OR LESS | IF LENGTH 'B' IS GREATER THAN 25 FEET |
|-----------|-------------------------------------|---------------------------------------|
| ① | TUBE, 3/4" O.D. x .035 WALL | TUBE, 3/4" O.D. x .035 WALL |
| ② | TUBE, 3/4" O.D. x .035 WALL | TUBE, 1" O.D. x .035 WALL |
| ③ | TUBE, 3/4" O.D. x .035 WALL | TUBE, 1" O.D. x .035 WALL |
| ④ | FITTING, 1/2" MPT x 3/4" COMP ELBOW | FITTING, 1/2" MPT x 3/4" COMP ELBOW |
| ⑤ | FITTING, 3/4" COMP ELBOW | SEE FIGURE 'A' BELOW |
| ⑥ | FITTING, 3/4" COMP TEE | SEE FIGURE 'B' BELOW |
| ⑦ | FITTING, 3/4" COMP TEE | FITTING, 1" COMP TEE |

