

VOLU-probe / 1

EXTERNALLY MOUNTED

AIRFLOW TRAVERSE PROBE



SUBMITTAL SHEET

STANDARD CONSTRUCTION

Probe. 3/4" or 1-3/8" dual chambered, Type 6063 anodized aluminum extrusion.
Mounting. Aluminum mounting plate. Threaded end support for probes greater than 18" long.
Mounting Gasket. Neoprene.
Connection Fittings. 1/4" brass compression type.
Identification Label. Paper w/pressure sensitive adhesive (Work Order Number, Model, Station ID, System ID, Size).

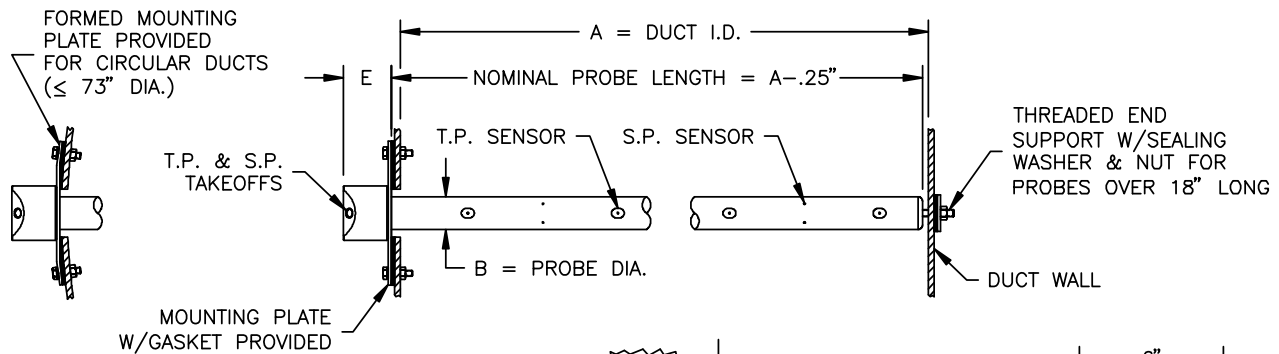
PERFORMANCE SPECIFICATIONS

Accuracy. 2%; dependent upon quantity and placement of probes to achieve traverse of ducted airflow.
Outputs. Individually averaged signals of total and static pressure.
Operating Velocity. 400-10,000 FPM.
Operating Temperature. Continuous operation to 200°F.
Directional Sensitivity. Not measurably affected by directional airflows with pitch and yaw angles up to 30°.
Traverse Pattern. On an equal area basis for rectangular probes. On an equal concentric area basis for circular probes.
Resistance. Less than 0.1 times the velocity pressure head at probe operating velocity.

OPTIONAL CONSTRUCTION

- Connection Fittings** Brass barbed for 1/4" OD tubing
- Non-Standard Sensor Pattern** For internal or external insulation

DIMENSIONAL SPECIFICATIONS



DIMENSIONAL CHART					
A"	B"	C"	D"	E"	MOUNTING PLATE
8-48	.75	1.25	.31	1.50	4" x 4"
>48-144	1.38	2.00	.38	2.00	6" x 6"

