

# VOLU-probe / 1P

## EXTERNALLY MOUNTED

### PURGEABLE AIRFLOW TRAVERSE PROBE

#### STANDARD CONSTRUCTION

<b>Probe.</b>	3/4" dual chambered, Type 6063 anodized aluminum extrusion.
<b>Mounting.</b>	Aluminum mounting plate. Threaded end support for probes greater than 18" long.
<b>Mounting Gasket.</b>	Neoprene.
<b>Connection Fittings.</b>	1/4" brass compression type.
<b>Identification Label.</b>	Paper w/pressure sensitive adhesive (Work Order Number, Model, Station ID, System ID, Size).

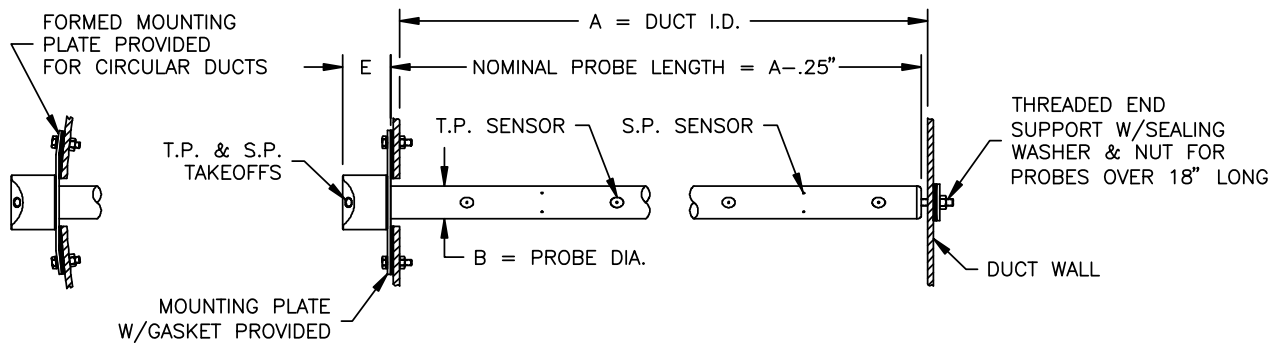
#### PERFORMANCE SPECIFICATIONS

<b>Accuracy.</b>	2%; dependent upon quantity and placement of probes to achieve traverse of ducted airflow.
<b>Outputs.</b>	Individually averaged signals of total and static pressure.
<b>Operating Velocity.</b>	400-10,000 FPM.
<b>Operating Temperature.</b>	Continuous operation to 200°F.
<b>Directional Sensitivity.</b>	Not measurably affected by directional airflows with pitch and yaw angles up to 30°.
<b>Traverse Pattern.</b>	On an equal area basis for rectangular probes. On an equal concentric area basis for circular probes.
<b>Resistance.</b>	Less than 0.1 times the velocity pressure head at probe operating velocity.
<b>Purge Air Pressure.</b>	30-50 PSIG.

#### OPTIONAL CONSTRUCTION

- Connection Fittings**  
Brass barbed for 1/4" OD tubing
- Non-Standard Sensor Pattern**  
For internal or external insulation

#### DIMENSIONAL SPECIFICATIONS



DIMENSIONAL CHART					
A"	B"	C"	D"	E"	MOUNTING PLATE
8-48	.75	1.25	.31	1.50	4" x 4"

