

# VOLU-probe / 2

## INTERNALLY MOUNTED

## AIRFLOW TRAVERSE PROBE



# SUBMITTAL SHEET

### STANDARD CONSTRUCTION

**Probe.** 3/4" or 1-3/8" dual chambered, Type 6063 anodized aluminum extrusion.  
**Mounting.** Dual galvanized end mounting brackets.  
**Connection Fittings.** 1/4" brass compression type.  
**Identification Label.** Paper w/pressure sensitive adhesive (Work Order Number, Model, Station ID, System ID, Size).

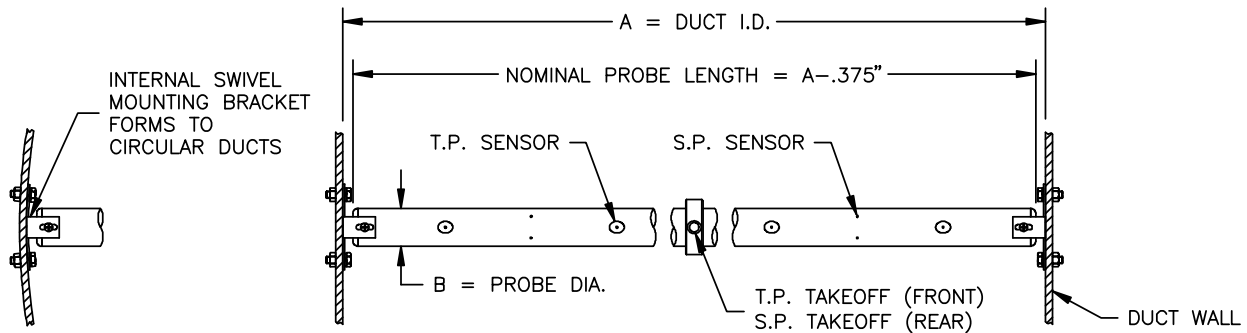
### PERFORMANCE SPECIFICATIONS

**Accuracy.** 2%; dependent upon quantity and placement of probes to achieve traverse of ducted airflow.  
**Outputs.** Individually averaged signals of total and static pressure.  
**Operating Velocity.** 400-10,000 FPM.  
**Operating Temperature.** Continuous operation to 200°F.  
**Directional Sensitivity.** Not measurably affected by directional airflows with pitch and yaw angles up to 30°.  
**Traverse Pattern.** On an equal area basis for rectangular probes. On an equal concentric area basis for circular probes.  
**Resistance.** Less than 0.1 times the velocity pressure head at probe operating velocity.

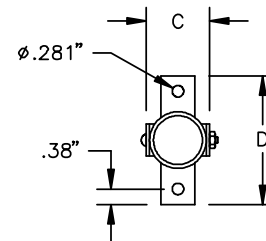
### OPTIONAL CONSTRUCTION

- Connection Fittings**  
Brass barbed for 1/4" OD tubing
- Non-Standard Sensor Pattern**  
For internal or external insulation

### DIMENSIONAL SPECIFICATIONS



DIMENSIONAL CHART			
A"	B"	C"	D"
8-48	.75	.91	2.50
>48-144	1.38	1.55	3.13



INTERNAL SWIVEL MOUNTING BRACKET

