

ELECTRA-flo/FI

FAN INLET APPLICATIONS

THERMAL AIR FLOW MEASURING SYSTEM

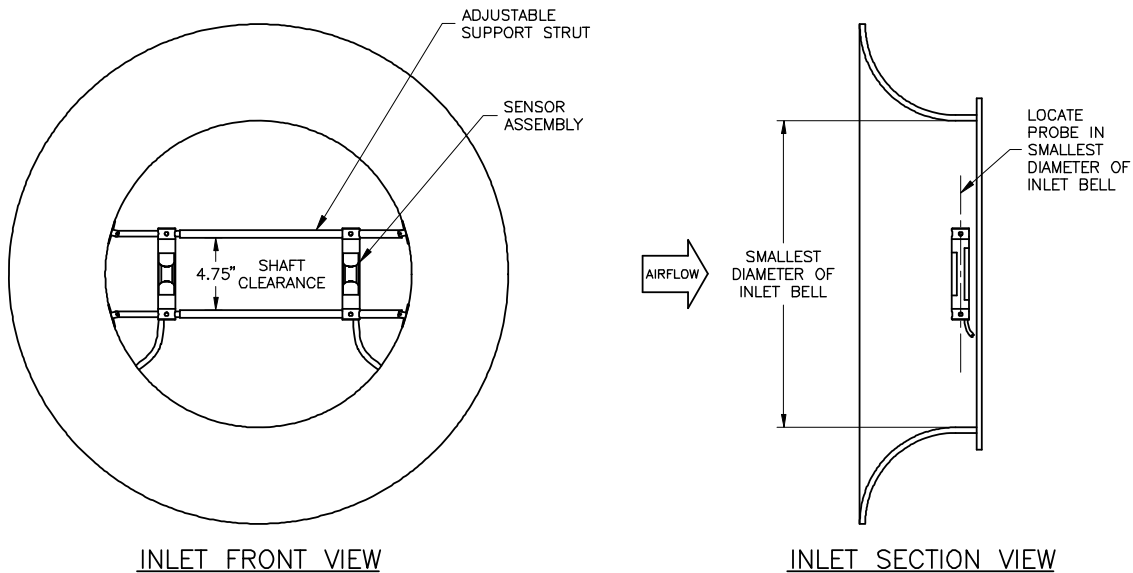
STANDARD CONSTRUCTION

Probe. Type 6063 anodized aluminum. 1-1/8" diameter.
Sensor Housing. Injection molded polycarbonate.
Sensor Type. Surface mount precision thermistor.
Sensor Signal Processing. Microprocessor with 12 bit A/D conversion for each sensor node.
Mounting. Stainless steel, tube-in-tube telescoping support struts. Stainless steel mounting brackets.
Probe to Transmitter Signal Connection. Integral Cat 5 cable with RJ-45 connector. Standard length 10'.

PERFORMANCE SPECIFICATIONS

Individual Sensor Accuracy. 2% of reading
Station Accuracy. 3-10% of actual airflow as installed. 2-3% of actual airflow with field adjustment.
Sensor Temperature Accuracy. ±0.1°F
Velocity Calibration Range. 0 to 10,000 FPM
Humidity Range. 0 to 99.5% RH, non condensing
Operating Temperature. -20°F to 140°F

DIMENSIONAL INFORMATION



RANGE DESIGNATOR	A	B	C	D	E	F	G	H
MIN. INLET DIAMETER (inches)	10.00	12.00	14.00	17.00	21.00	27.00	36.00	48.00
MAX. INLET DIAMETER (inches)	11.00	13.99	16.99	20.99	26.99	35.99	47.99	64.00

