

ELECTRA-flo/FI

THERMAL AIRFLOW MEASURING SYSTEM

FAN INLET - DWDI (DOUBLE WIDE, DOUBLE INLET)

STANDARD CONSTRUCTION

Probe:	Type 6063 anodized aluminum. 1-1/8" diameter.
Sensor Housing:	Injection molded polycarbonate.
Sensor Type:	Hermetically sealed, precision matched thermistors mounted in flow conditioning aperture.
Sensor Signal Processing:	Microprocessor with 16 bit A/D conversion for each sensor node.
Probe Mounting:	Stainless steel, tube-in-tube telescoping support struts. Stainless steel mounting brackets.
Junction Box Construction:	NEMA 4 polycarbonate enclosure with hinged cover and waterproof cable connectors.
Sensor to Junction Box Connection:	Integral plenum rated cable with connector, 10' long.
Junction Box to Transmitter Connection:	Integral plenum rated cable with connector. Standard length 10'.

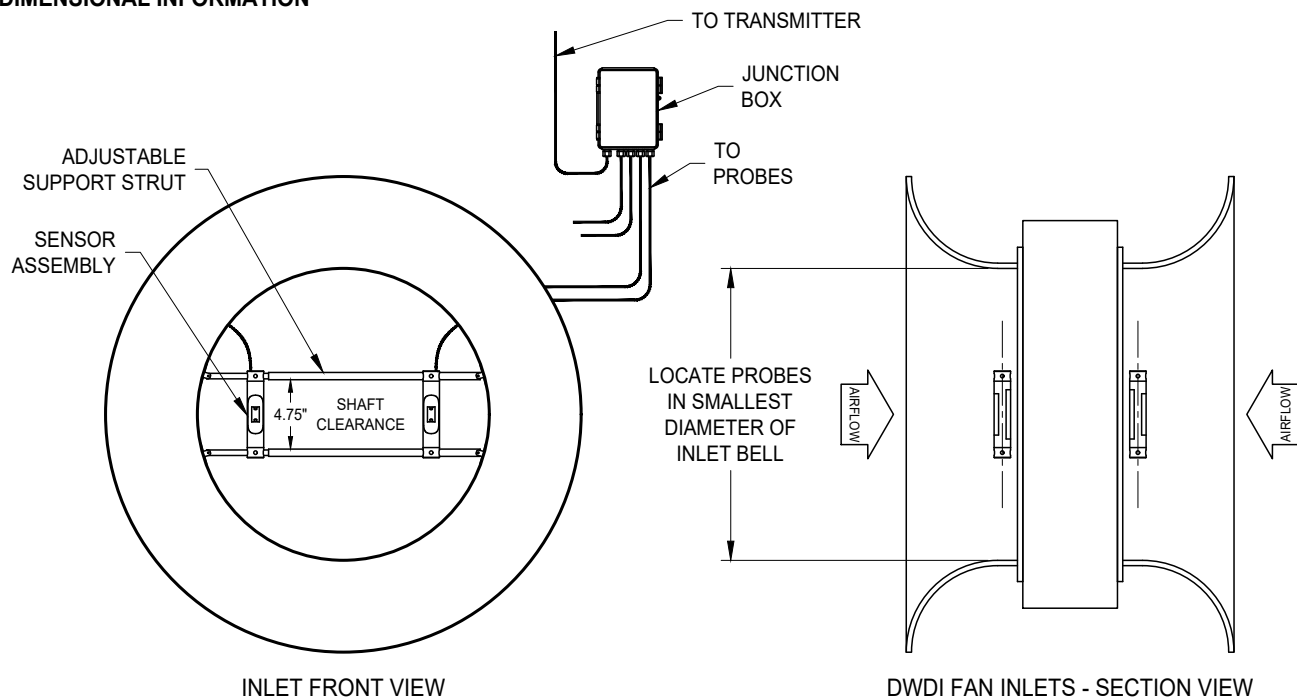
PERFORMANCE SPECIFICATIONS

Individual Sensor Accuracy:	±2% of reading
Station Accuracy:	±2 to 3% of airflow, requires field characterization
Sensor Temperature Accuracy:	±0.1 °F
Qty. Calibration Points per Sensor:	6
Velocity Calibration Range:	0 to 10,000 FPM
Operating Temperature:	-20 °F to 140 °F
Operating Humidity:	0 to 99% RH, non-condensing

CONSTRUCTION OPTIONS:

Junction Box to Transmitter Cable Length:
 10' (default) 25' 50' 100'

DIMENSIONAL INFORMATION



P.O. Box 6358, Santa Rosa, CA 95406 (707) 544-2706
 www.airmonitor.com hvacsales@airmonitor.com