

**OAM II AIRFLOW STATION
OUTDOOR AIRFLOW MEASURING SYSTEM**

STANDARD CONSTRUCTION

- Casing:** 14 gauge galvanized sheetmetal, intermittently welded, sealed with metal caulking.
- Flanges:** 1½" wide, 90° formed flanges.
- Screen:** Electroplated Expanded Metal. 61% open area, 0.048" thick, 0.304" short opening, 1.000" long opening. 9.5 diamonds per sq. ft long opening side. 24 diamonds per sq. ft short opening side.
- Flow Sensor:** Uni-Sensor style, Type 316 Stainless Steel, 3" length. One sensor required per 30 sq. ft of station size.
- Connection Fittings:** Stainless steel compression bulkheads.
- Temperature Sensor:** 100 ohm platinum RTD, 3 wire

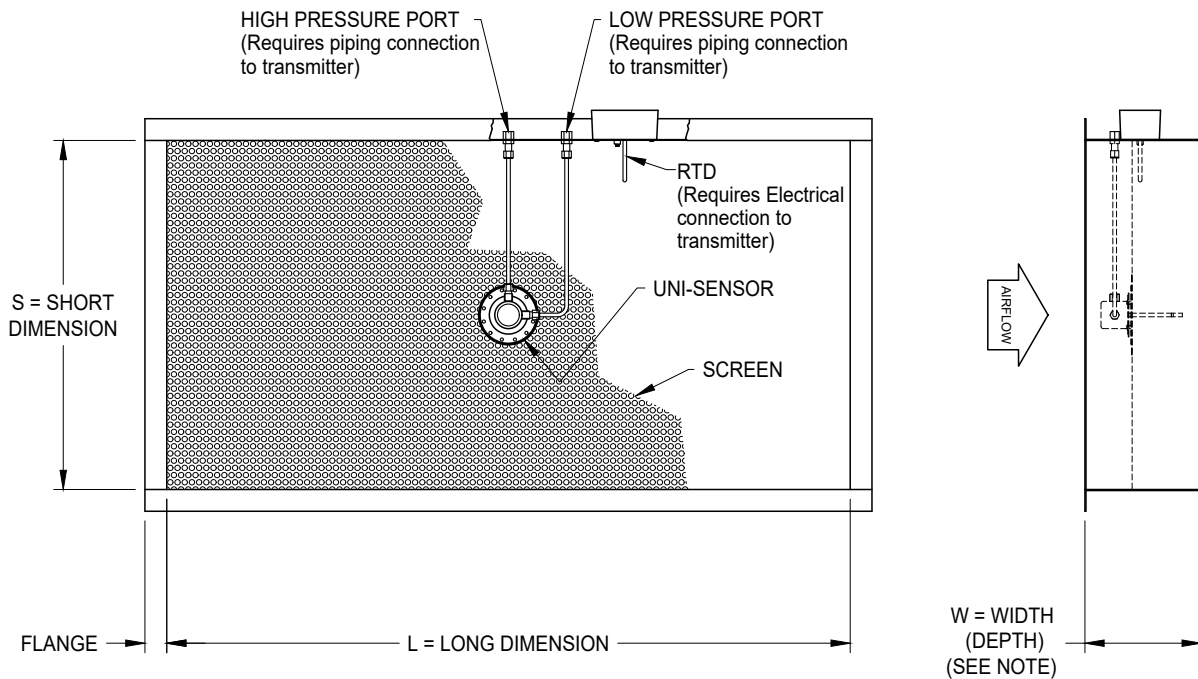
PERFORMANCE SPECIFICATIONS

- Free Inlet (Hood) Application Accuracy:** ±5% of reading from 150 to 2400 SFPM, AMCA listed.
- Ducted Application Accuracy:** ±5% of reading from 150 to 2400 SFPM, AMCA listed.

OPERATING CONDITIONS

- Fluid Temperature Range:** -40 to 120°F

DIMENSIONAL SPECIFICATIONS AND CONNECTIONS REQUIRED



NOTE: If a damper is to be mounted immediately downstream of station, damper blades must not extend into casing. Select a longer 'W' dimension.

OAM II AIRFLOW STATION OUTDOOR AIRFLOW MEASURING SYSTEM

Airflow Station Model Number Coding = OAM II-AFS-ABC-DEF-GGH

OAM II AFS = Outdoor Airflow Measuring Station

A = Long Dimension (in)

A = 8" to 12"	G = >72" to 84"
B = >12" to 24"	H = >84" to 96"
C = >24" to 36"	I = >96" to 108"
D = >36" to 48"	J = >108" to 120"
E = >48" to 60"	K = >120" to 132"
F = >60" to 72"	L = >132" to 144"

B = Short Dimension (in)

A = 8" to 12"	G = >72" to 84"
B = >12" to 24"	H = >84" to 96"
C = >24" to 36"	I = >96" to 108"
D = >36" to 48"	J = >108" to 120"
E = >48" to 60"	K = >120" to 132"
F = >60" to 72"	L = >132" to 144"
	R = Round duct

C = Casing Width (in)

A = 8" depth (Default)
C = Up to 16" depth
D = Up to 24" depth

D = Materials of Construction

1 = 14 ga Galvanized steel, 1½" 90 degree flanges

E = Screen Material of Construction

1 = Expanded Metal, 61% FA

F = Process Connections

2 = ¼" comp fittings
3 = 3/16" hose barb fittings

GG = Number of Sensors

01 = 1	06 = 6
02 = 2	07 = 7
03 = 3	08 = 8
04 = 4	09 = 9
05 = 5	10 = 10

H = Uni-Sensor Design

3 = 3" Uni-Sensor, typical

Notes

1. Uni-sensor qty is based on type and size of installation
2. Options selected may impact price.