

# VOLU-probe / 2SS – INDUSTRIAL INTERNALLY MOUNTED STAINLESS STEEL AIRFLOW TRAVERSE PROBE

**STANDARD CONSTRUCTION**

**Probe.** 1/2", 3/4" or 1" tube sensing manifolds, mounting plates, signal connection fittings, and identification tag, all fabricated of Type 316 stainless steel.  
**Mounting.** Internal duct mounted. Dual end mounting plates.  
**Connection Fittings.** 1/4" FPT stainless steel for sizes up to 24". 1/2" FPT stainless for sizes > 24".  
**Operating Temperature.** Continuous operation to 900°F.

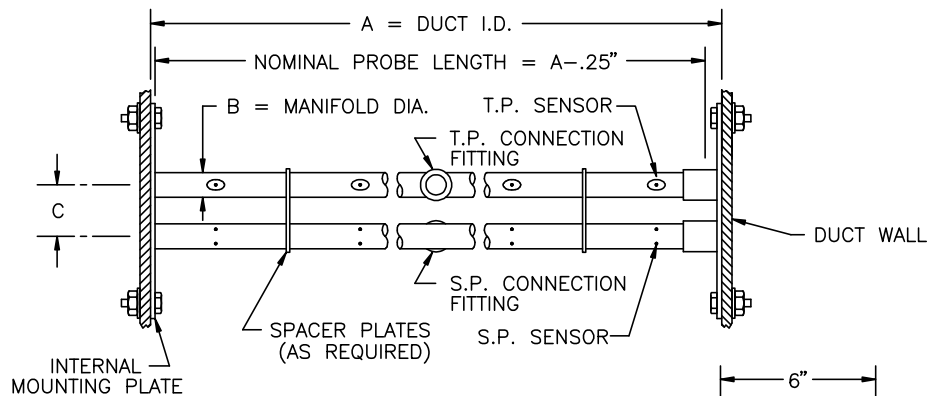
**PERFORMANCE SPECIFICATIONS**

**Accuracy.** 2-3%; dependent upon quantity and placement of probes to achieve traverse of ducted airflow.  
**Outputs.** Individually averaged signals of total and static pressure.  
**Operating Velocity.** 400-10,000 FPM.  
**Directional Sensitivity.** Not measurably affected by directional airflows with pitch and yaw angles up to 30°.  
**Traverse Pattern.** On an equal area basis for rectangular probes. On an equal concentric area basis for circular probes.  
**Resistance.** Less than 0.1 times the velocity pressure head at probe operating velocity.

**CONNECTION FITTINGS.**

- 1/4" Compression
- 1/2" Compression

**DIMENSIONAL SPECIFICATIONS**



DIMENSIONAL CHART				
A"	B"	C"	MOUNTING PLATE	CONNECTION FITTING SIZE
12-24	.50	1.50	4" x 4"	1/4" FPT
>24-120	.75	2.00	6" x 6"	1/2" FPT
>120-240	1.00	2.25	6" x 6"	1/2" FPT

