

Y-SHAPED END SUPPORT BRACKET FOR MOUNTING INSIDE CARBON STEEL DUCTS

STANDARD CONSTRUCTION

Bracket. 14 ga. (0.080) carbon steel sheet.
Plate. 10 ga. (0.135) carbon steel plate.

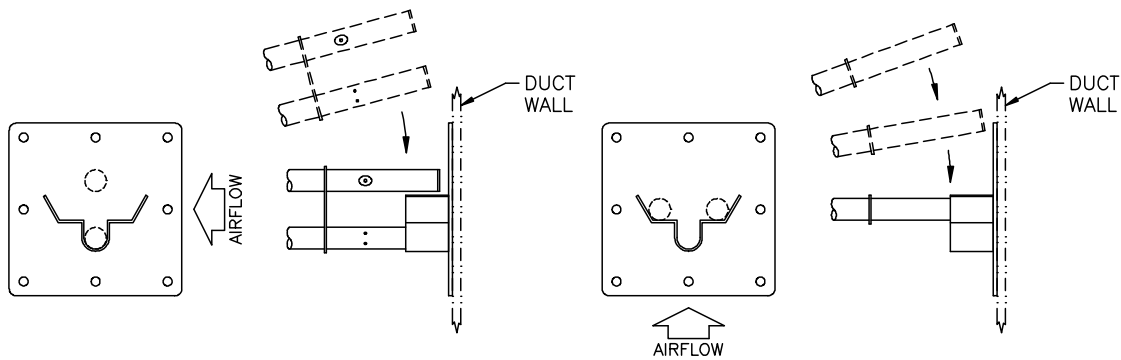
FUNCTION

This bracket provides an alternate means for guide-in and securing the end of stainless steel VOLU-probes inside carbon steel ducts. Bracket may be bolted in place or welded directly to duct wall. Bracket may be used for rectangular ducts of all sizes, or circular ducts 74" diameter or greater.

OPTIONAL CONSTRUCTION

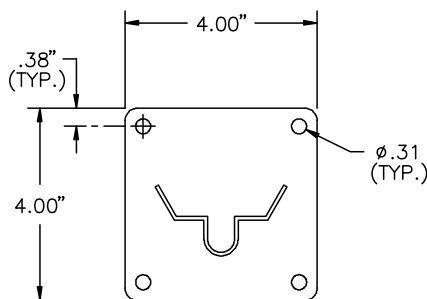
Stainless steel bracket and plate.

DIMENSIONAL SPECIFICATIONS (inches)

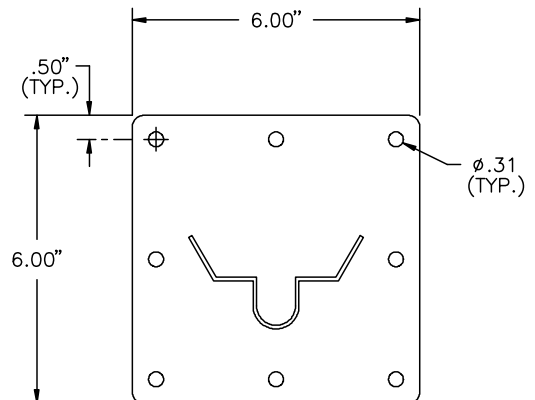


BRACKET DESIGN ACCOMMODATES HORIZONTAL OR VERTICAL PROBE INSTALLATIONS

SUPPORT LENGTH	DUCT SIZE
1/2"	>18" -24"
1"	>24" -56"
2"	>56" -88"
3"	>88"



FOR PROBES >18-24" LONG



FOR PROBES >24-240" LONG

