

AUTO-purge III

SEQUENCE OF OPERATIONS

IDENTIFICATION CODE

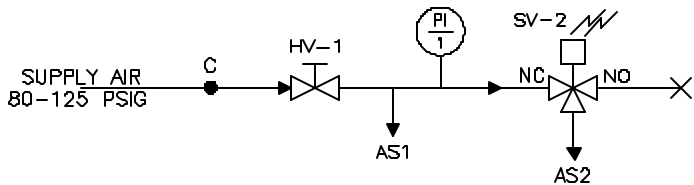
AS1	Pilot Line Air
AS2	High Pressure Purge Line Air
HV-1	Supply Air Shut Off Valve
PI-1	Gauge, Supply Air Pressure, 0-160 psig
R-1	Purge Management Relay (optional for third party transmitter or Air Monitor's VELTRON DPT- <i>plus</i> and MASS-tron/CEM)
SV-1A	Solenoid Operated (externally piloted) 3-Way Valve, Static (low) Pressure
SV-1B	Solenoid Operated (externally piloted) 3-Way Valve, Total (high) Pressure
SV-2	Solenoid Operated 3-Way Main Air Valve

SEQUENCE OF OPERATIONS

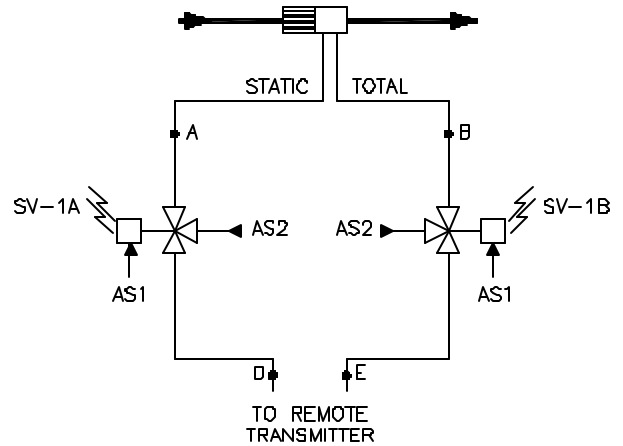
The AUTO-purge sequence is initiated by a remote Air Monitor flow transmitter, optional AUTO-purge smart relay or by external momentary dry contact from a DCS. The remote Air Monitor flow transmitter automatically holds the last measured value prior to transmitter isolation from the process (the AUTO-purge acknowledgment contact may be used to signal a DCS or third party transmitter to hold the last measured value when an

Air Monitor flow transmitter is not used). Next, the AUTO-purge isolates the remote transmitter from the sensing lines and high pressure air purges the sensing manifolds. After purging is complete, the sensing lines depressurize and the remote flow transmitter is reconnected to process and resumes normal flow measurement. For more detail on valve actuation and timing intervals, see Purge Cycle Timing Diagram (SUB-B021).

SCHEMATIC



SUPPLY AIR SCHEMATIC



STATIC & TOTAL PRESSURE SCHEMATIC

