

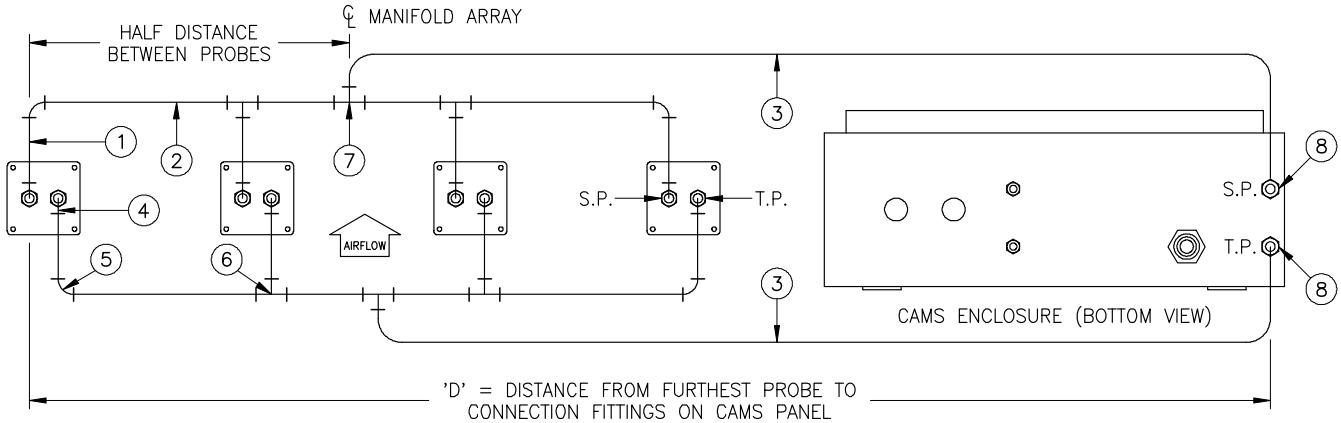
# AUTO-purge III

## TUBING REQUIREMENT FROM AIRFLOW MEASURING PROBES TO THE AUTO-purge PANEL

**FUNCTION**

This Submittal Sheet specifies the signal tubing sizes and fitting requirements from the connection fittings on the probes to the center of the manifolding arrays, and from the center of the manifolding arrays to the connection fittings on the bottom of the AUTO-purge Panel.

**TUBING LAYOUT**



ITEM	DISTANCE 'D'		
	< 25 FT.	25 – 50 FT.	> 50 FT.
1	1/2" TUBE	1/2" TUBE	1/2" TUBE
2	1/2" TUBE	3/4" TUBE	3/4" TUBE
3	1/2" TUBE	3/4" TUBE	1" TUBE
4	1/2" MPT X 1/2" COMP. ELBOW	1/2" MPT X 1/2" COMP. ELBOW	1/2" MPT X 1/2" COMP. ELBOW
5	1/2" COMP. ELBOW	SEE FIGURE 'A' 3/4" COMP. X 3/4" FPT ELBOW & 3/4" MPT X 1/2" COMP. ADAPTER	SEE FIGURE 'A' 3/4" COMP. X 3/4" FPT ELBOW & 3/4" MPT X 1/2" COMP. ADAPTER
6	1/2" COMP. TEE	SEE FIGURE 'B' 3/4" COMP. X 3/4" FPT BRANCH TEE & 3/4" MPT X 1/2" COMP. ADAPTER	SEE FIGURE 'B' 3/4" COMP. X 3/4" FPT BRANCH TEE & 3/4" MPT X 1/2" COMP. ADAPTER
7	1/2" COMP. TEE	3/4" COMP. TEE	SEE FIGURE 'B' 3/4" COMP. X 3/4" FPT BRANCH TEE & 3/4" MPT X 1" COMP. ADAPTER
8	1/2" MPT X 1/2" COMP. ADAPTER	1/2" MPT X 3/4" COMP. ADAPTER	1/2" MPT X 1" COMP. ADAPTER

RECOMMENDED TUBING WALL THICKNESS  
 .035" WALL TUBING IS SUITABLE FOR COMPRESSION FITTINGS. IF SOCKET WELD FITTINGS ARE SUBSTITUTED, INCREASE WALL THICKNESS TO .065".

