

AUTO-purge III – High Capacity

STANDARD CONSTRUCTION

- Brass and Copper Construction
- Stainless Steel Construction

All wetted tubing, fittings, and valves constructed of copper and/or brass.
Enclosure is NEMA 4 painted steel.
External connection fittings are stainless steel FPT.

All wetted tubing, fittings, and valves are constructed of 316 stainless steel.
Enclosure is NEMA 4 painted steel.
External connection fittings are stainless steel FPT.

OPTIONAL CONSTRUCTION

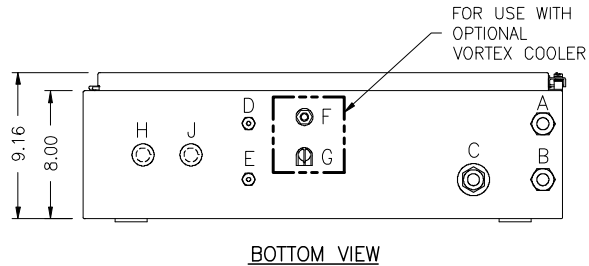
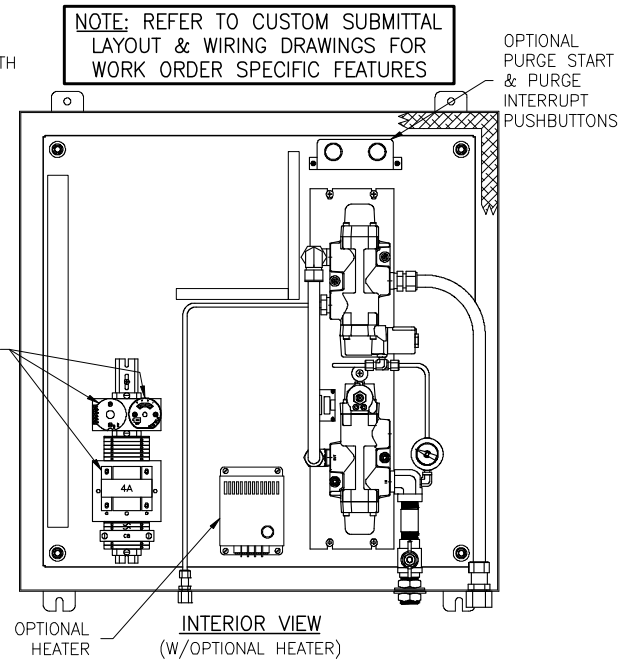
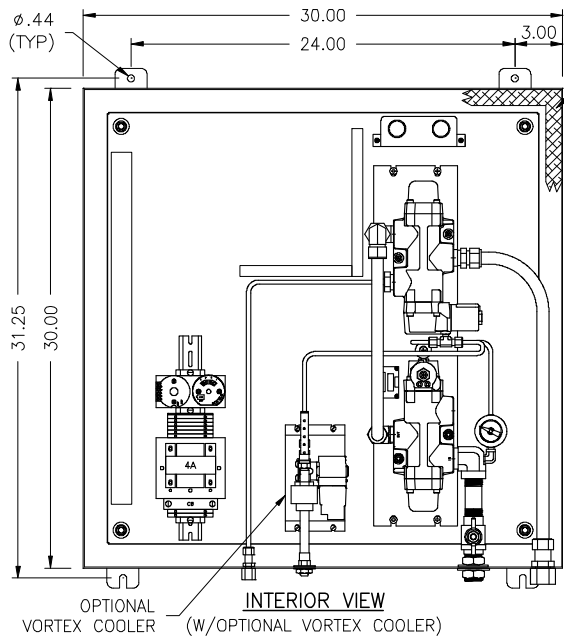
- NEMA 4X Stainless Steel Enclosure
- Vortex Cooler. Requires 80-100 psi air supply*
- Enclosure Heater, Requires 120VAC power supply**
- Purge start and/or purge interrupt pushbuttons
 - Panel mounted
 - Door mounted

Power Supply

(check one)	<u>In Rush</u>	<u>Hold</u>
<input type="checkbox"/> 24VAC	74VA	62VA
<input type="checkbox"/> 24VDC	28W	28W
<input type="checkbox"/> 120VAC	93VA	78VA

* Add 2 watts @ 24-99V / 50-60Hz/DC for 400 BTUH @ 100 psig ≤70°F
**Add 1.7A @ 120VAC for 200 watt heater

DIMENSIONAL SPECIFICATIONS



CONNECTION CODE:

- | | |
|--|-------------------|
| A. STATIC PRESSURE (LO) SIGNAL FROM FLOW ELEMENT | 3/4" (F)NPT |
| B. TOTAL PRESSURE (HI) SIGNAL FROM FLOW ELEMENT | 3/4" (F)NPT |
| C. SUPPLY AIR 80-125 PSIG | 3/4" (F)NPT |
| D. STATIC PRESSURE TO REMOTE TRANSMITTER | 1/4" (F)NPT |
| E. TOTAL PRESSURE TO REMOTE TRANSMITTER | 1/4" (F)NPT |
| F. VORTEX COOLER EXHAUST | N/A |
| G. VORTEX COOLER ENCLOSURE VENT | N/A |
| H. ELECTRICAL CONNECTION POWER WIRING | 1/2" CONDUIT SEAL |
| J. ELECTRICAL CONNECTION SIGNAL WIRING | 1/2" CONDUIT SEAL |

